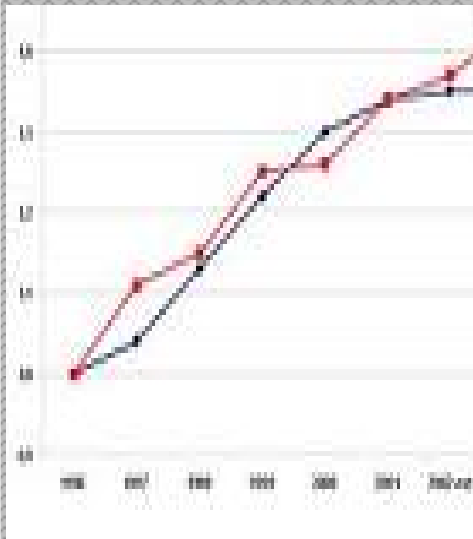


Non-Communicable Disease Statistics - 2007

Hospital Discharge Data



**Non-Communicable Diseases Unit
Ministry of Health, Sri Lanka**

*September,
2011*

Non-Communicable Disease Statistics - 2007

Hospital Discharge Data

Non-Communicable Diseases Unit

Ministry of Health

Sri Lanka

Contents

Introduction	5
Table 1: Non-communicable Diseases Indoor Morbidity and Mortality Statistics by Broad Disease Groups, 2007	6
Figure 1 : Distribution of NCD Morbidity by Broad Disease Groups, 2007	7
Figure 2 : Distribution of NCD Mortality by Broad Disease Groups, 2007	8
Figure 3 : Non-communicable Diseases Indoor Morbidity Statistics by Broad Disease Groups and Gender, 2007	9
Figure 4 : Non-communicable Diseases Indoor Morbidity Statistics by Broad Disease Groups and Gender Ratio, 2007	10
Figure 5 : Distribution of NCD Morbidity by Broad Disease Groups and Age Groups, 2007	11
Table 2: NCD Morbidity and Mortality pattern by Broad Disease Groups, 1990-2007	12
Figure 1 : Neoplasms (COO-D48).....	13
Figure 2 : Mental and behavioural disorders (FOO-F99)	13
Figure 3 : Diseases of the nervous system (GOO-G98)	14
Figure 4 : Diseases of the circulatory system	14
Figure 5 : Diseases of the respiratory system.....	15
Figure 6 : Injury, poisoning and certain other consequences of external causes	15
Figure 7 : NCD Trend in Hospital Morbidity Broad Disease Groups, 1990-2007	16
Figure 8 : NCD Trend in Hospital Mortality by Broad Disease Groups, 1990-2007	16
Table 3: Trends in Hospitalisation and Hospital Deaths of Selected NCDs, 1990-2007	17
Figure 4 : Hypertensive disease (I10-I15)	18
Figure 5 : Ischaemic heart disease (I20-I25)	18
Figure 6 : Asthma (J45)	19
Figure 8 : Trends in Hospitalisation of Selected NCDs, 1990-2007.....	19
Figure 9 : Trends in Hospital Deaths of Selected NCDs, 1990-2007	20
Table 1 : Leading NCD admissions in hospitals, 2007.....	21
Table 2 : Leading NCD Related Causes of Hospitalization by District, 2007	22
Table 3 : Percentage of NCD admissions and their ranking order, 1997 - 2007	23
Table 4 : Trend in Percentage of NCD Hospitalization, 1997 - 2007	24
Table 5 : Leading NCD Related Hospital Deaths, 2007	25
Table 6 : Leading NCD Related Hospital Deaths by District, 2007.....	26
Table 7 : Percentage distribution of Hospital Deaths and ranking order, 1997- 2007	27
Table 8 : Trends in NCD related Hospital Death percentages, 1997 - 2007	28

Table 9 : Age Specific Mortality Rates per 100,000 Population by Broad Disease Groups Related to NCDs, 2001 ..	29
Table 10 : Age Specific Mortality Rates per 100,000 Population, 2001	30
Table 11: Age Specific Mortality Rates per 100,000 Population, 2001	30
Table 12: Age Specific Mortality Rates per 100,000 Population, 2001	31
Table 13: Age Specific Mortality Rates per 100,000 Population, 2001	31
Table 14 : Age Specific Mortality Rates per 100,000 Population by Broad Disease Groups Related to NCDs, 2001.	32
Table 15: Age Specific Mortality Rates per 100,000 Population by Broad Disease Groups Related to NCDs, 2001 .	32
Table 16 : Age and Sex specific Mortality Rates Per 100,000 Population for Selected NCDs, 2001.....	33
Table 17 : Sex specific mortality Rates per 100,000 Population for Selected NCDs, 2001	34
Table 18 : Age and Sex specific mortality Rates per 100,000 Population for Neoplasms, 2001	34
Table 19 : Age and Sex specific mortality Rates per 100,000 Population for Mental and behavioural disorders, 2001	35
Table 20: Age and Sex specific mortality Rates per 100,000 Population for Hypertensive diseases, 2001	35
Table 21 : Age and Sex specific mortality Rates per 100,000 Population for Ischaemic heart diseases, 2001	36
Table 22 : : Age and Sex specific mortality Rates per 100,000 Population for Diseases of the respiratory system, 2001	36
Table 23 : Age and Sex specific mortality Rates per 100,000 Population for Transport accidents, 2001.....	37
Table 24 : Age and Sex specific mortality Rates per 100,000 Population for Accidental poisoning by and exposure to noxious substances, 2001.....	37
Table 25 : Age and Sex specific mortality Rates per 100,000 Population for Intentional self-harm, 2001.....	38
Table 26 : Case Fatality Rate for Selected NCDs, 2003, 2004, 2005, 2006* and 2007	39
Table 27 : Case Fatality Rate for Selected NCDs, 2003, 2004, 2005, 2006* and 2007	39

Introduction

The morbidity and mortality data available in the Annual Health Bulletin (AHB) published by the Ministry of Health comprises of data relating to patients seeking treatment as inpatients in government hospitals. The data available in this work was based on the most currently available AHB at the time of publication; i.e. AHB 2007. This secondary data does not include patients attending outpatient departments of government hospitals, ayurvedic institutions and the private sector. Other than the limited information collected through surveys, registers maintained by the special campaigns and programmes for control of Cancer, the Indoor Morbidity and Mortality Return (IMMR) is the sole source of morbidity data.

During the year under review, 6.4% of the discharges and 10.3% of the deaths in government hospitals (that reported) had not been analyzed. This was pronounced in the large hospitals. This lapse is mainly due to reasons such as incomplete patient records, shortage of statistical staff, lack of supervision at all levels, lack of facilities, patient records retained in wards for a long period of time and not sent in time to be analyzed, etc. according to the AHB. Further, the AHB attributes such lapses to the poor commitment and data not being used for the management of hospitals by those involved.

This work was produced with the intension of satisfying the current demand for NCD related information of the NCD unit of the Ministry of Health, though this may not give a complete picture of all NCD related data. The graphs derived from the tables are indented to provide a better understanding of patterns and trends for NCD prevention and health promotion.

Table 1: Non-communicable Diseases Indoor Morbidity and Mortality Statistics by Broad Disease Groups, 2007

Disease Group	Total ⁽¹⁾	Live Discharges ⁽¹⁾ (%)									Deaths ⁽¹⁾
		Sex		Age Group							
		Male	Female	Under 1	1-4	5-16	17-49	50-69	70 & above	Not known	
Neoplasms (COO-D48)	65838	45.9	54.1	0.6	3.1	5.5	32.5	44.5	13.6	0.2	3498
Diabetes mellitus (E10-E14)	61489	45.5	54.5	0.0	0.2	1.3	28.3	51.9	18.0	0.3	545
Mental and behavioral disorders (FOO-F99)	40333	58.8	41.2	0	0.2	4.1	67.4	22.8	4.9	0.7	0
Hypertensive diseases (I10-I15)	93985	41.7	58.3	0	0	0	20.6	47.7	30.3	1.4	583
Ischaemic heart disease (I20-I25)	85455	54.2	45.8	0	0	0	20.3	50.3	28.3	1.0	4536
Cerebrovascular disease (I60-I69)	28114	59.7	40.3	0	0	0	12.3	45.5	41.0	1.2	3193
Diseases of the resp. system exclu. (J20-J22, J40-J98)	365741	53.0	47.0	8.8	14.1	12.6	23.1	24.4	15.6	1.5	2260
Traumatic injuries (S00-T19, W59)	669052	67.6	32.4	0.8	6.9	17.2	53.1	16.4	5.3	0.3	1389
Burns and corrosion (T20-T32)	13409	57.3	42.7	2.8	21.1	15.3	46.4	10.9	3.4	0.2	292
Toxic effects of pesticides (T60.0,T60.1-T60.9)	17723	60.3	39.7	0.4	3.6	9.7	73.6	10.4	2.0	0.3	1148
Snake bites (T63.0)	39321	59.9	40.1	0.4	3.0	13.4	58.0	20.9	3.9	0.3	91
Toxic effects of other subs. Other than..(T36-T59,T61,T63.1-T65)	44998	45.4	54.6	1.2	10.1	15.4	62.5	8.5	2.0	0.2	413
Sequelae of injuries, poisoning and of other..(T90-T98)	1843	55.7	44.3	2.0	6.6	14.0	49.7	19.5	8.0	0.1	1

Source : Extracted from Annual Health Bulletin, Ministry of Health, Sri Lanka, page 109

1. Total=Number of live Discharges +Deaths)

Figure 1 : Distribution of NCD Morbidity by Broad Disease Groups, 2007

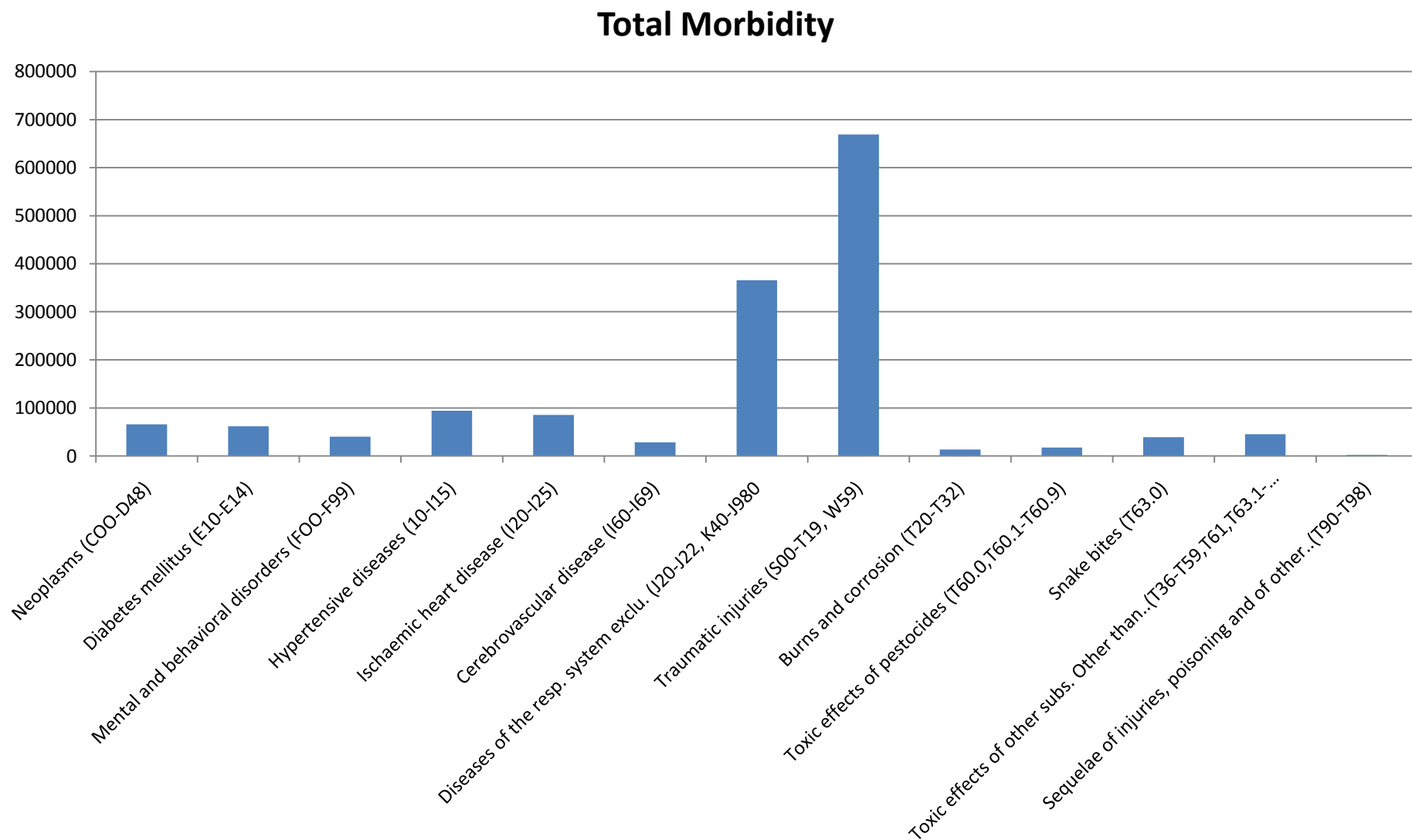


Figure 2 : Distribution of NCD Mortality by Broad Disease Groups, 2007

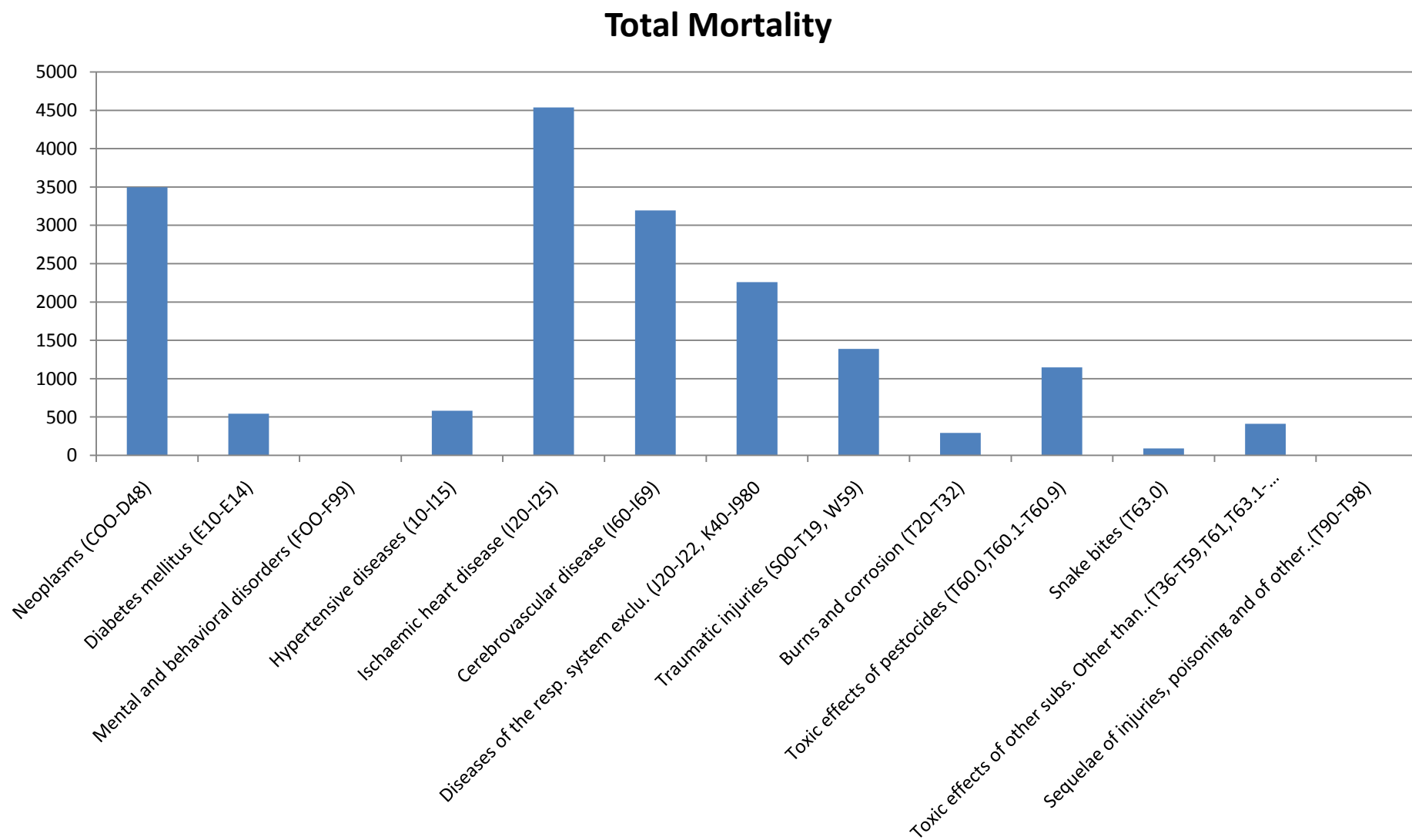


Figure 3 : Non-communicable Diseases Indoor Morbidity Statistics by Broad Disease Groups and Gender, 2007

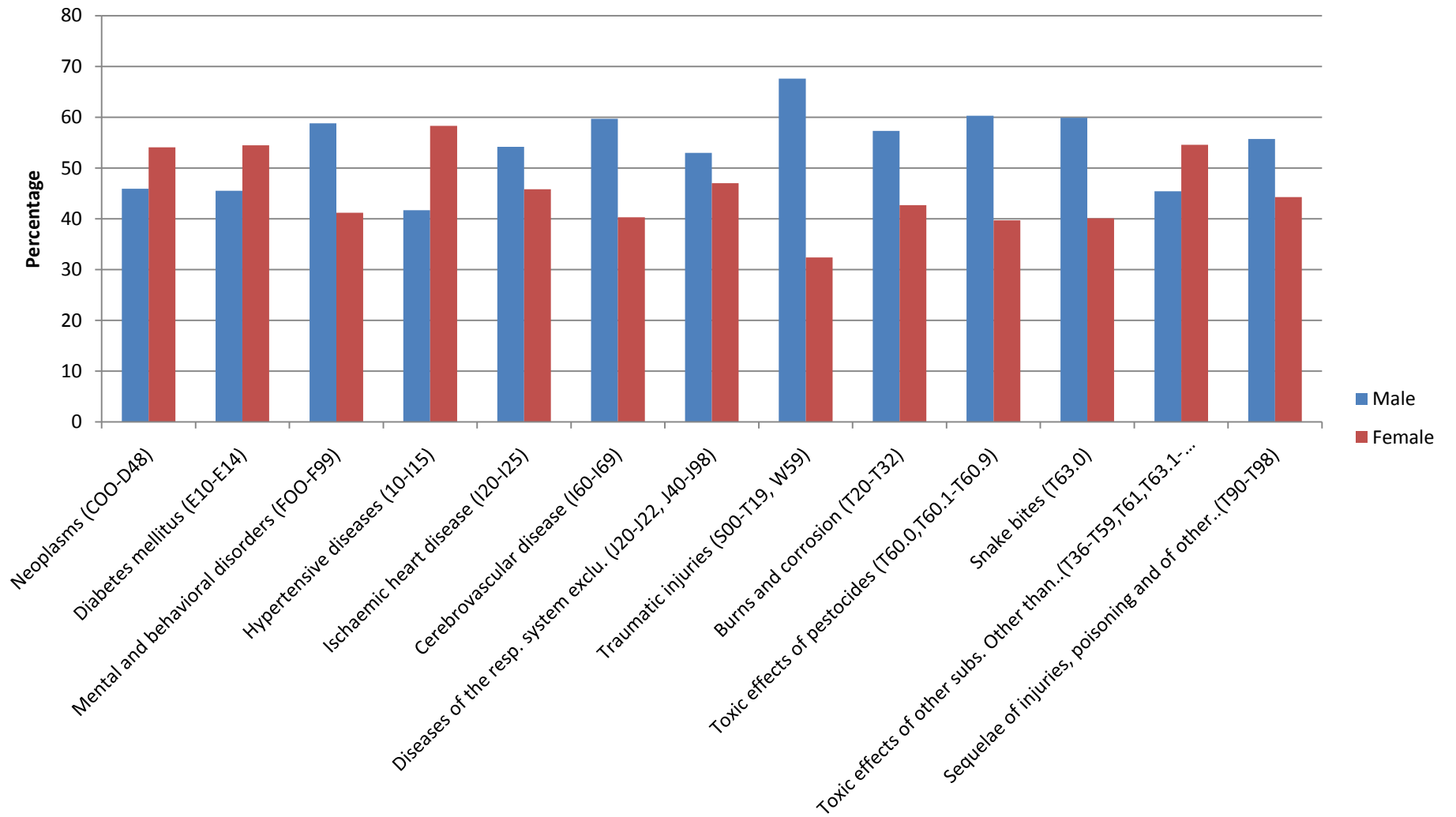


Figure 4 : Non-communicable Diseases Indoor Morbidity Statistics by Broad Disease Groups and Gender Ratio, 2007

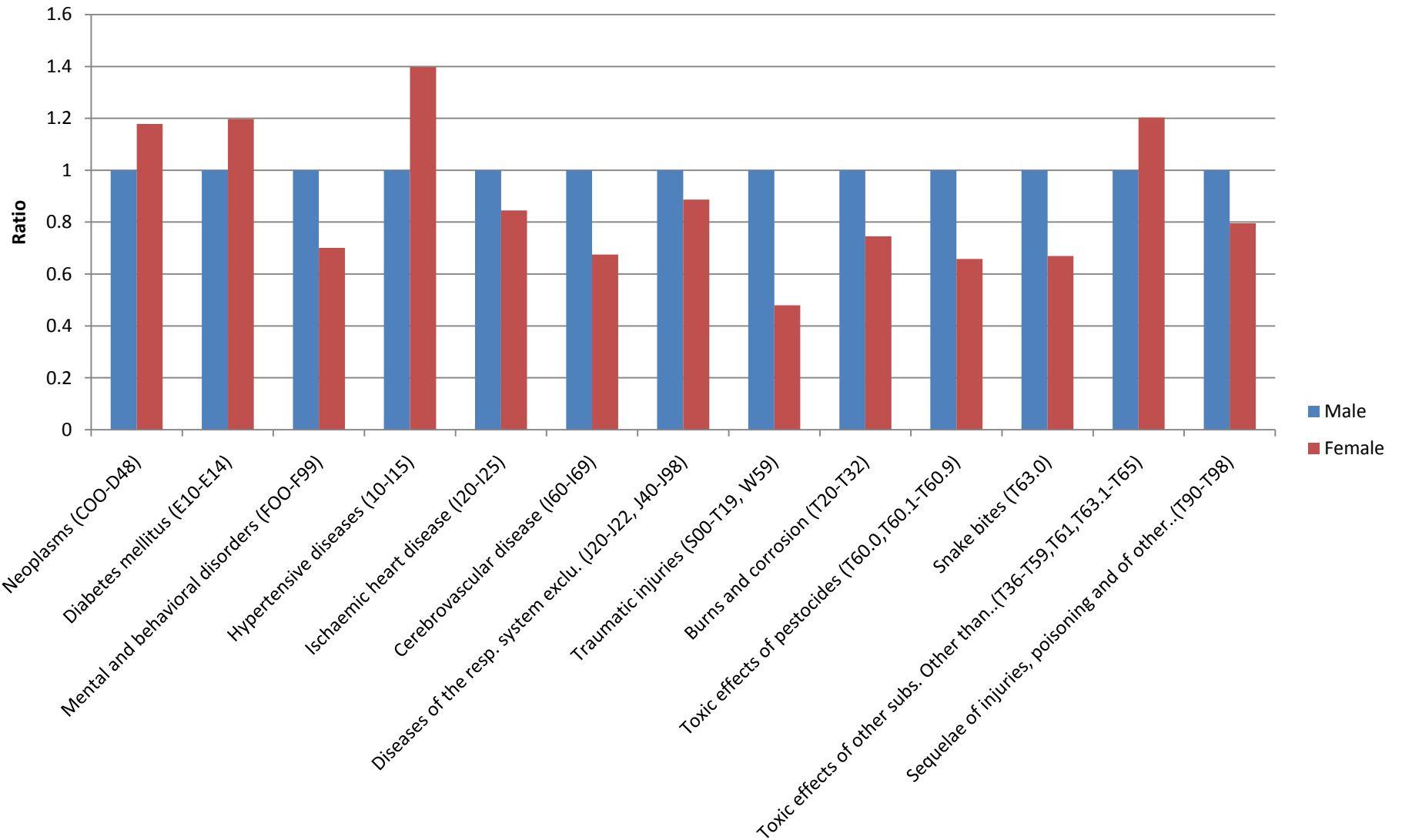


Figure 5 : Distribution of NCD Morbidity by Broad Disease Groups and Age Groups, 2007

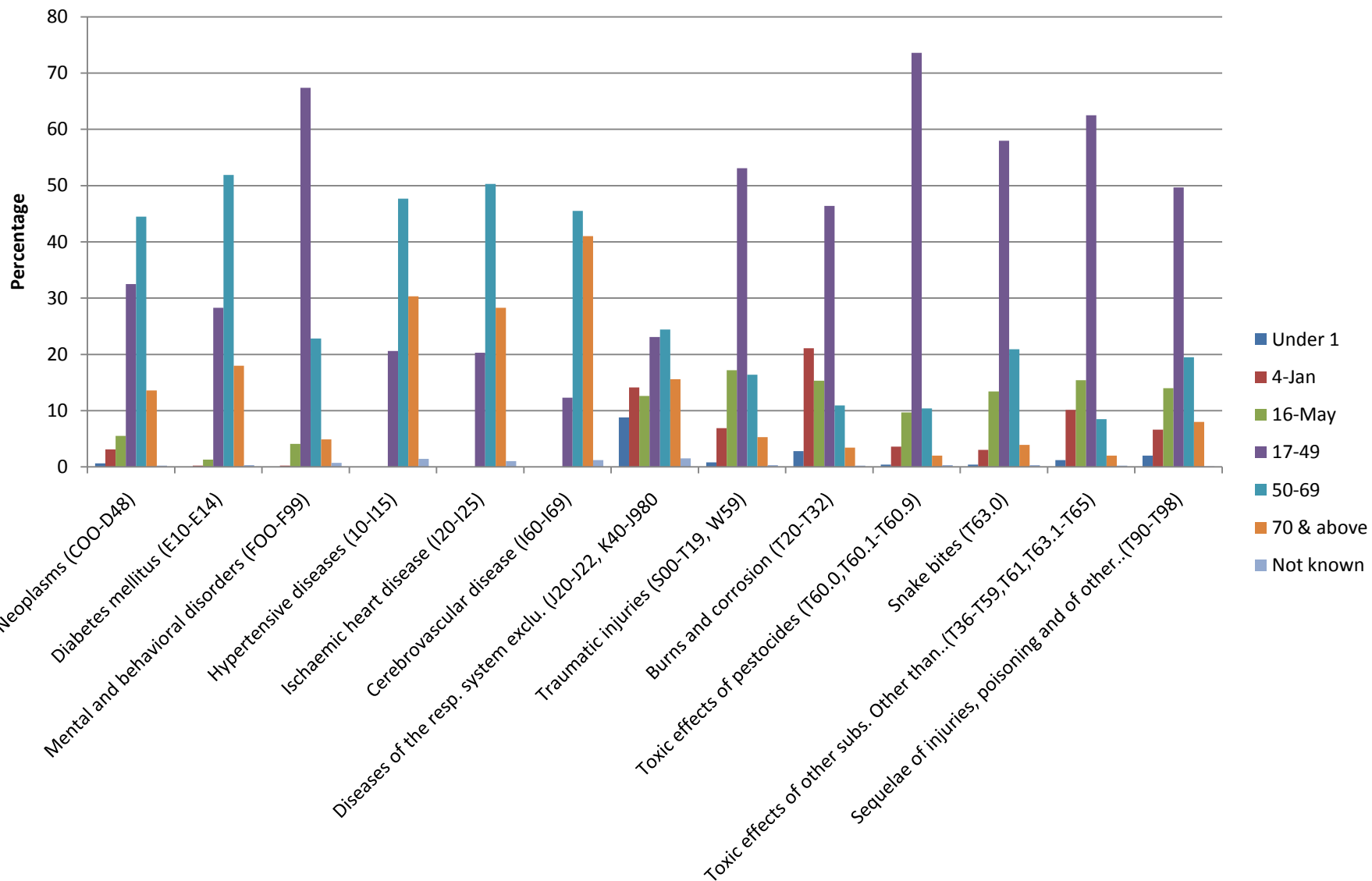


Table 2: NCD Morbidity and Mortality pattern by Broad Disease Groups, 1990-2007

ICD 10	Cases per 100,000 population								Deaths per 100,000 population							
	1990 ⁽¹⁾	1995 ⁽²⁾	2000	2003	2004	2005	2006	2007	1990 ⁽¹⁾	1995 ⁽²⁾	2000	2003	2004	2005	2006	2007
Neoplasms (COO-D48)	142.1	190.1	260.2	276.2	301.7	282.2	289.7	329.0	10.2	11.6	13.2	6.7	15.8	14.0	16.3	17.5
Mental and behavioural disorders (FOO-F99)	211.3	261.6	247.0	211.4	199.8	215.7	211.1	201.6	0.4	0.6	0.7	0.1	0.0	0.0	0.0	0.0
Diseases of the circulatory system	645.4	925.5	1153.0	1206.7	1188.2	1236.0	1266.6	1364.6	41.7	50.6	54.0	50.3	52.4	52.6	55.6	59.9
Diseases of the respiratory system	2057.2	2088.7	2313.4	2352.7	2243.3	2139.2	2536.2	2399.0	13.3	16.0	18.1	17.3	18.8	20.2	18.7	18.5
Injury, poisoning and certain other consequences of external causes	1799.8	2552.1	3345.7	3371.7	3361.5	3460.6	3809.0	4090.0	23.3	22.7	23.6	17.7	17.0	19.6	17.4	17.1

Source : Extracted from Annual Health Bulletin, Ministry of Health, Sri Lanka, page 110

Excludes:

1. Northern and Eastern Provinces
2. Jaffna, Kilinochchi, Mullaitivu and Ampara districts

Figure 6 : Neoplasms (COO-D48)

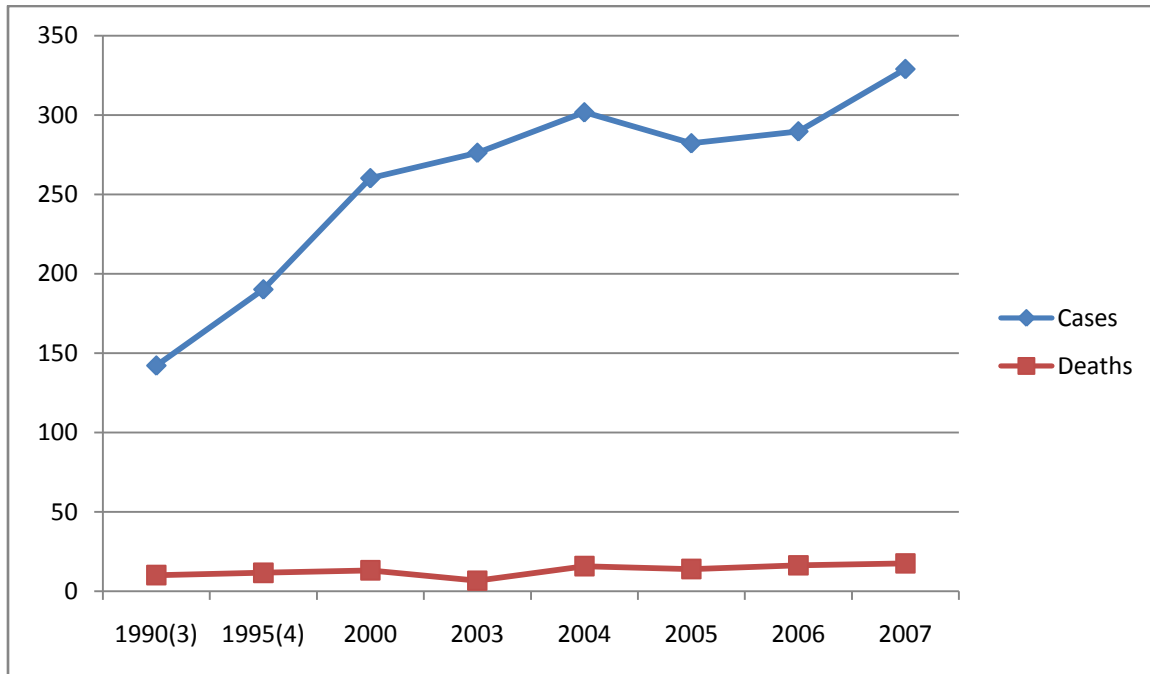


Figure 7 : Mental and behavioural disorders (FOO-F99)

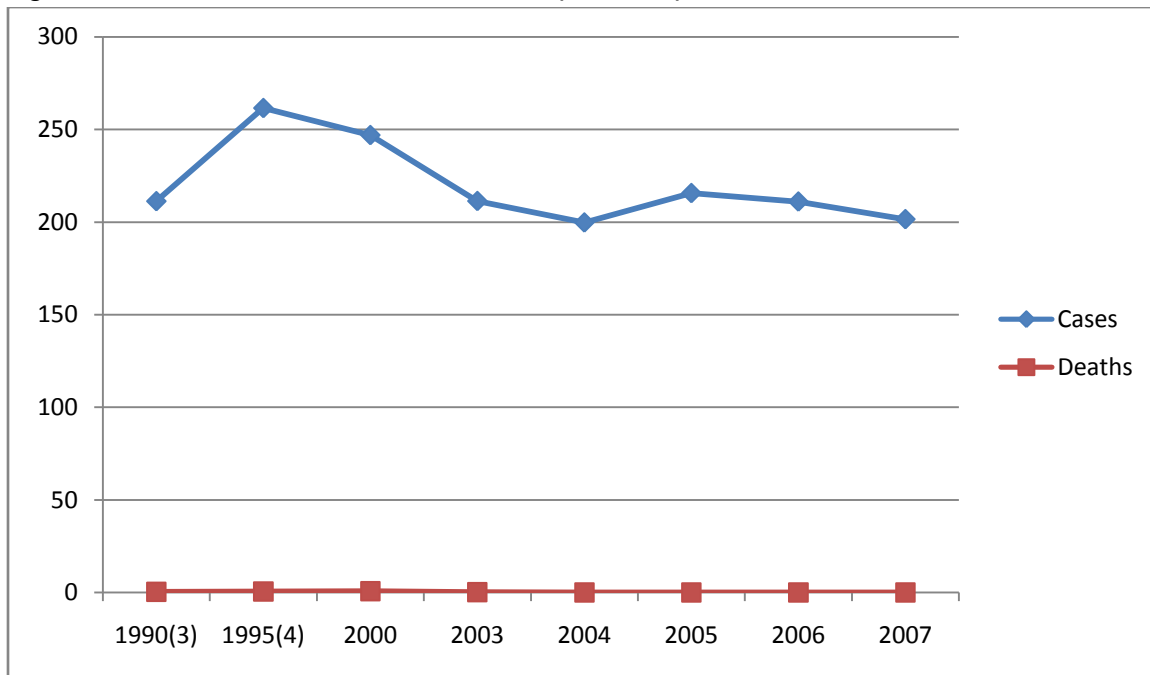


Figure 8 : Diseases of the nervous system (G00-G98)

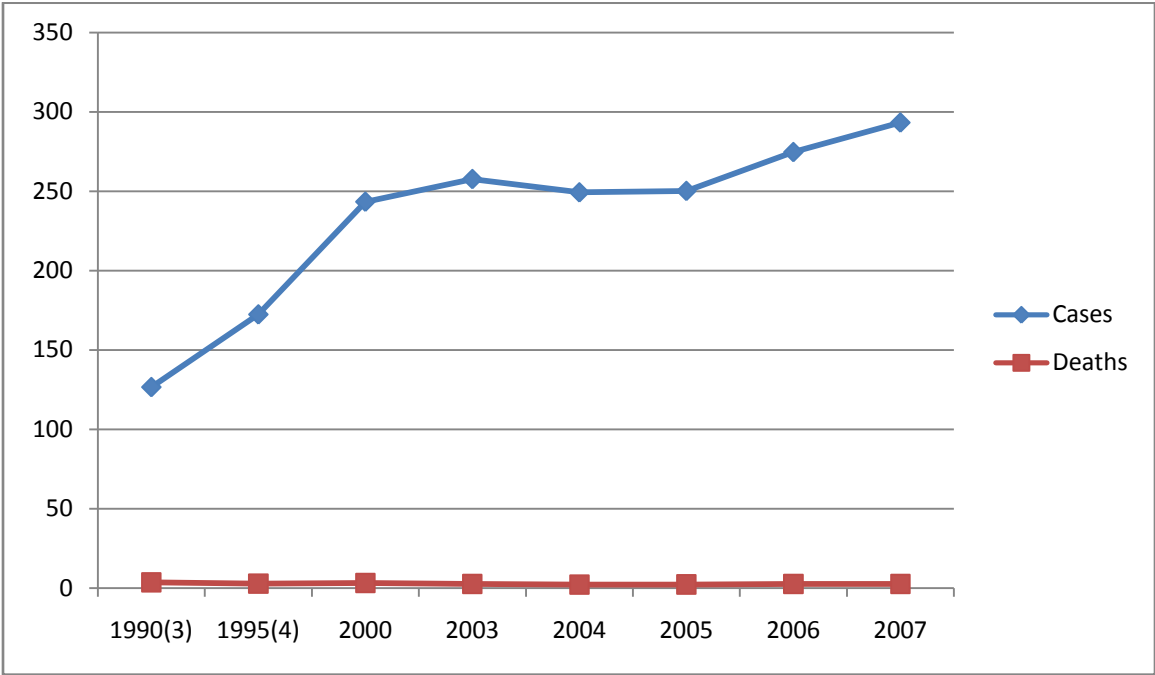


Figure 9 : Diseases of the circulatory system

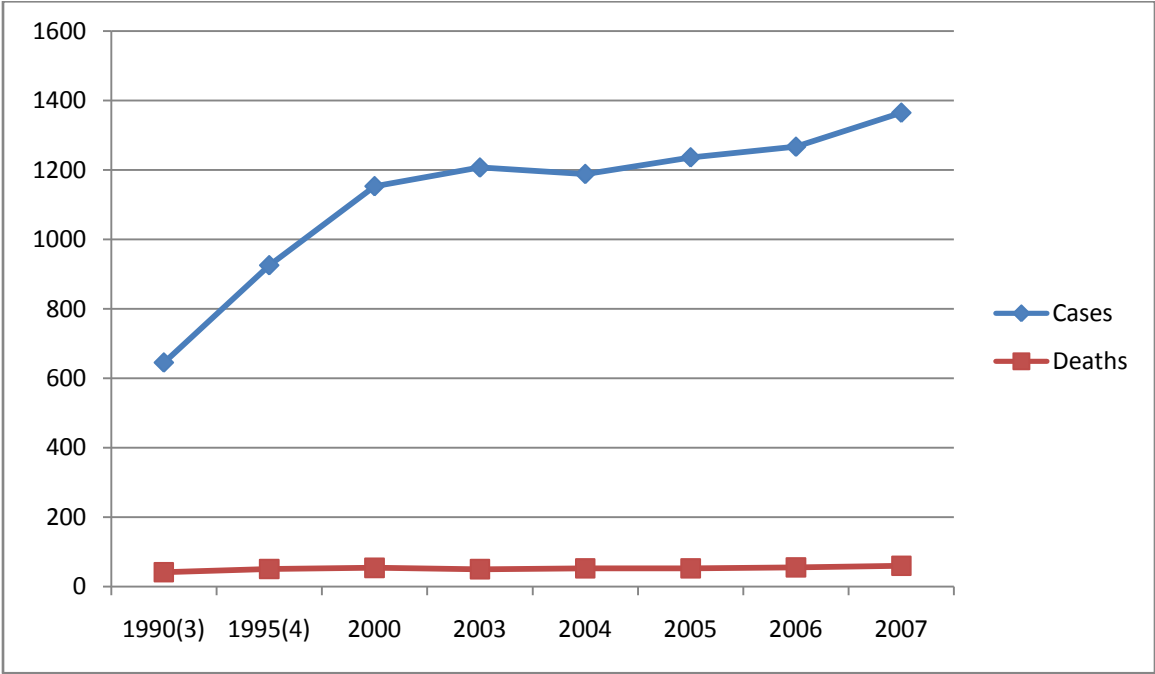


Figure 10 : Diseases of the respiratory system

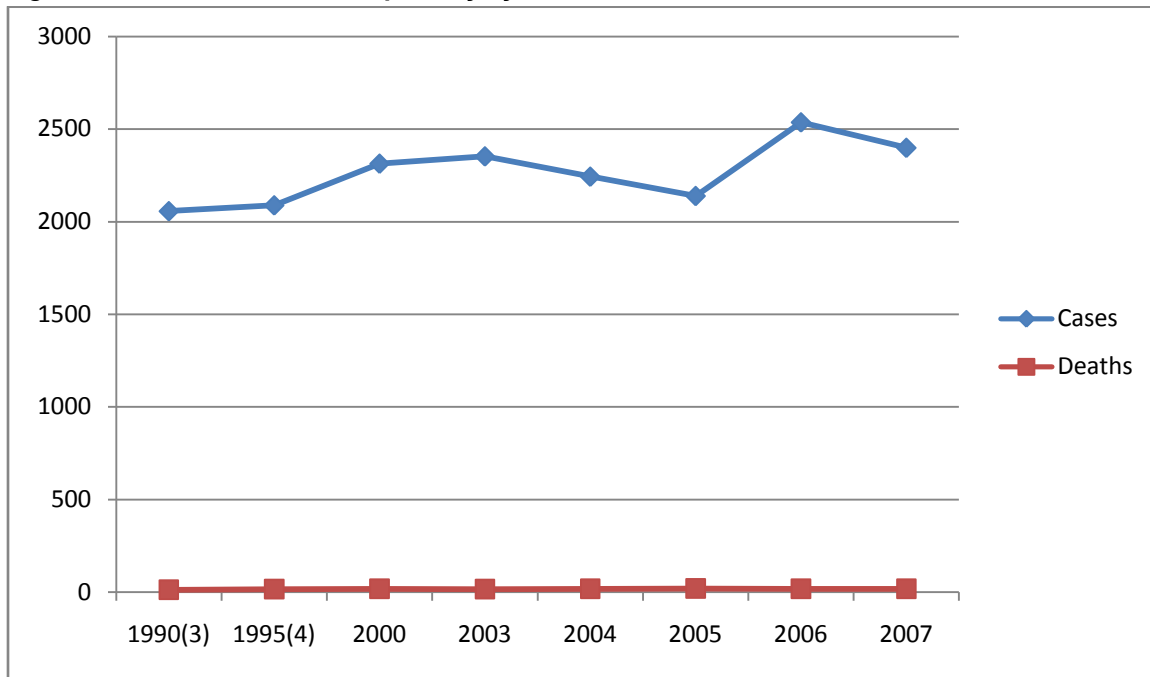


Figure 11 : Injury, poisoning and certain other consequences of external causes

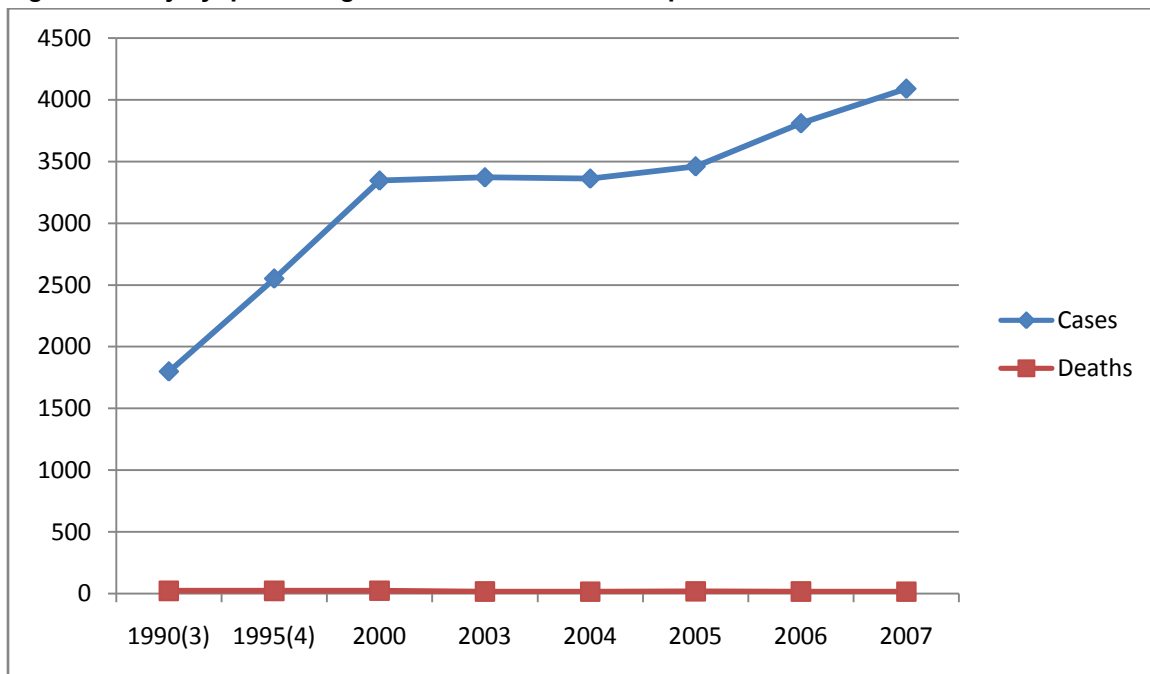


Figure 12 : NCD Trend in Hospital Morbidity Broad Disease Groups, 1990-2007

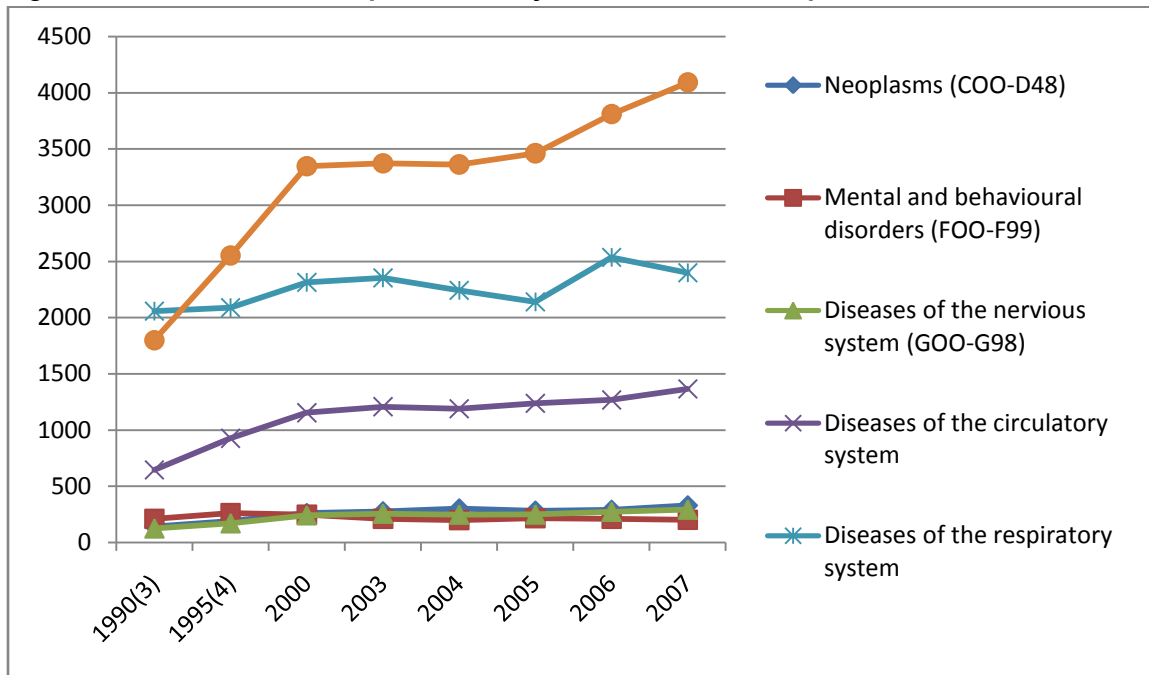


Figure 13 : NCD Trend in Hospital Mortality by Broad Disease Groups, 1990-2007

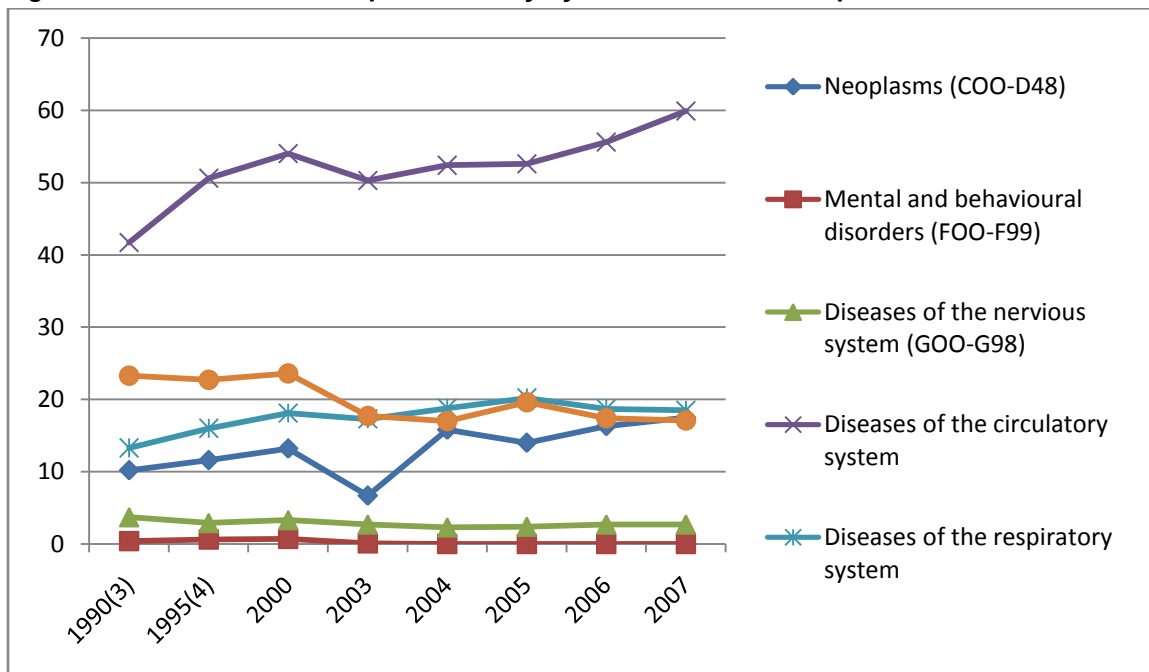


Table 3: Trends in Hospitalisation and Hospital Deaths of Selected NCDs, 1990-2007

Disease and ICD 10 code	Cases per 100,000 population								Deaths per 100,000 population							
	1990 ⁽¹⁾	1995 ⁽²⁾	2000	2003	2004	2005	2006	2007	1990 ⁽¹⁾	1995 ⁽²⁾	2000	2003	2004	2005	2006	2007
Diabetes mellitus (E10-E14)	87.5	78.6	204.8	231.1	246.8	265.2	296.8	307.3	2.0	3.8	3.7	2.9	2.5	3.4	3.0	2.7
Hypertensive disease (I10-I15)	200.7	326.7	428.3	444.1	417.2	429.1	480.4	469.8	3.6	3.1	3.3	2.9	2.7	3.6	3.0	2.9
Ishcaemic heart disease (I20-I25)	163.2	263.3	313.2	341.7	336.4	353.9	399.9	427.1	15.1	16.8	18.6	18.8	19.2	19.1	20.7	22.7
Asthma (J45)	554.7	779.3	894.8	921.4	832.1	817.3	910.4	893.5	2.0	3.7	4.4	3.6	4.3	4.3	3.8	3.6

Source : Extracted from Annual Health Bulletin, Ministry of Health, Sri Lanka, page 111

Excludes:

1. Northern and Eastern Provinces
2. Jaffna, Kilinochchi, Mullaitivu and Ampara districts

Figure 14 : Hypertensive disease (I10-I15)

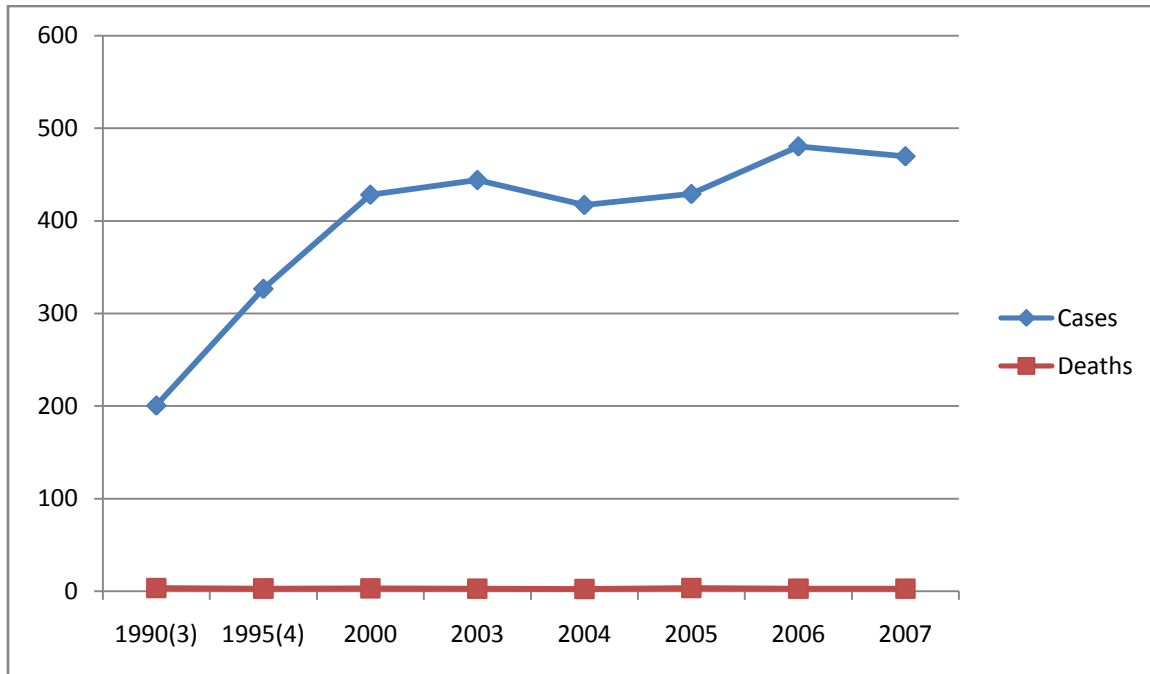


Figure 15 : Ischaemic heart disease (I20-I25)

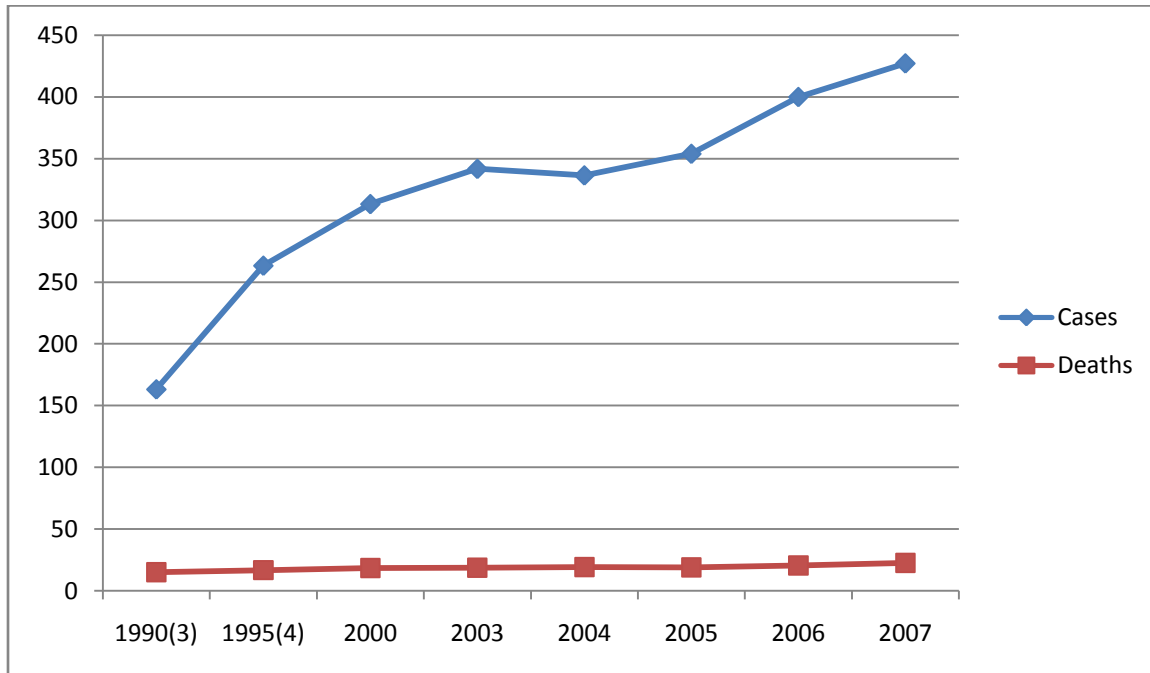


Figure 16 : Asthma (J45)

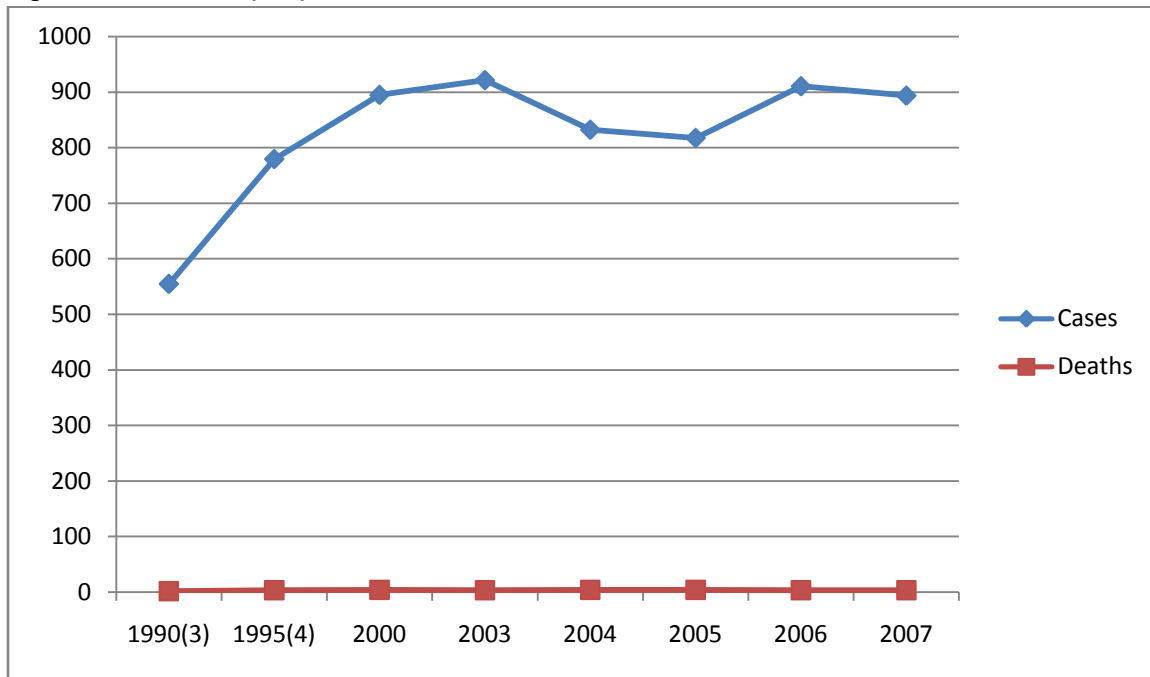


Figure 17 : Trends in Hospitalisation of Selected NCDs, 1990-2007

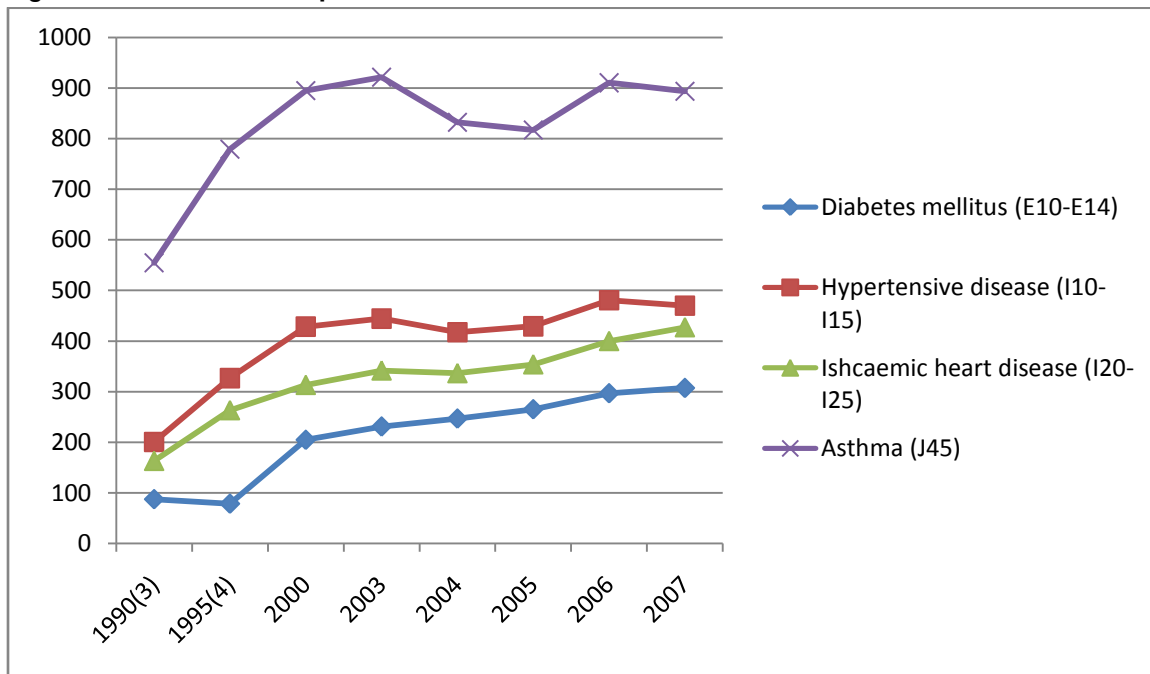


Figure 18 : Trends in Hospital Deaths of Selected NCDs, 1990-2007

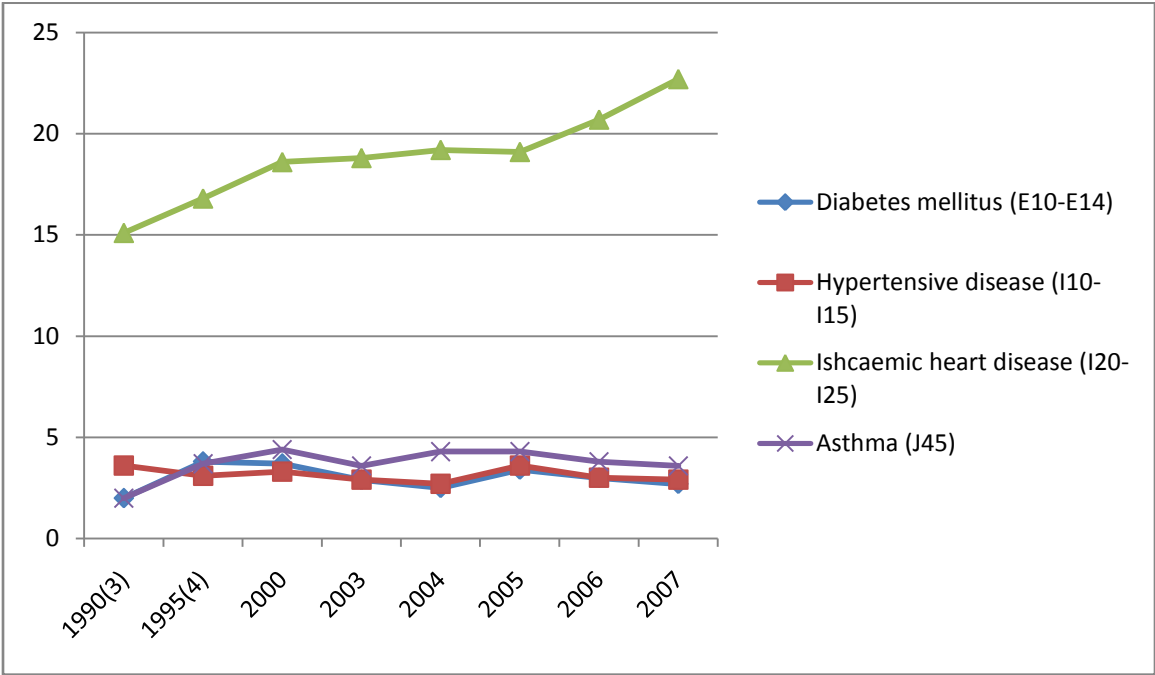


Table 2 : Leading NCD admissions in hospitals, 2007

Rank Order	ICD Code (10th Revision)	Causes of Hospitalization	Number of Cases	Proportionate Morbidity	Rate per 100,000 Population
1	S00-T19, W54	Traumatic injuries	606,889	16.1	3,032.9
2	J20-J22, J40-J98	Diseases of the respiratory system, excluding diseases of upper respiratory tract	365,741	9.7	1,827.8
11	I10-I15	Hypertensive diseases	93,985	2.5	469.7
	A00-T98, Z35 Z00-Z13, Z30.2 Z40-Z54	All causes ⁽¹⁾	3,776,825	100.0	18,874.7

Source : Extracted from Annual Health Bulletin, Ministry of Health, Sri Lanka, page 112

1. Analyzed hospital admissions only.

Excludes :

1. Persons encountering health services for examination, investigation and for specific procedures of health care.

Table 3 : Leading NCD Related Causes of Hospitalization by District, 2007

Rank Order	District and																									
	Sri Lanka	Colombo	Gampaha	Kalutara	Kandy	Matale	Nuwera Eliya	Galle	Matara	Hambantota	Jaffna	Vavuniya	Mannar	Kilinochchi	Mullativu	Batticaloa	Ampara	Trincomalee	Kurunegale	Puttalam	Anuradhapura	Polonnaruwa	Badulla	Moneragale	Rathnapura	Kegalle
Traumatic injuries (S00-T19, W54)	1	1	1	1	1	1	1	1	1	1	1	1	1	7	1	2	1	1	1	1	1	1	1	1	1	1
Diseases of the respiratory system excluding diseases of the upper the respiratory tract, pneumonia and influenza (J20-J22, J40-J98)	2	4	2	2	3	3	2	2	3	2	2	6	2	1	2	1	2	2	2	2	3	2	2	2	2	2
Hypertensive diseases (I10-I15)	13	16	13	13	13	14	8	15	14	12	14	8	4	5	12	11	9	8	13	15	12	16	10	9	12	10
Neoplasms (C00-D48)	15	3	19	19	10	19	19	13	19	19	17	9	16	15	19	19	19	19	18	11	18	19	14	19	16	18
Poisoning and toxic effects, excluding toxic effects of pesticides (T36-T59, T64, T61-T62, T65)	16	17	15	16	17	16	14	18	15	16	12	16	15	11	9	13	15	15	16	19	15	15	17	16	15	15
Mental and behavioural disorders (F00-F99)	17	14	16	18	16	17	15	16	17	17	15	18	12	14	17	16	18	17	17	13	17	17	16	17	17	19
Snake bites (T63.0)	18	19	18	17	19	15	18	17	16	13	19	17	17	12	14	14	16	16	15	18	13	13	19	13	14	16
Other diseases of the circulatory system (I70-I84)	19	18	17	15	18	18	17	19	18	18	18	19	19	18	18	17	17	18	19	16	19	18	18	18	19	17

Source : Extracted from Annual Health Bulletin, Ministry of Health, Sri Lanka, page 113

■	Among the first five leading causes
■	Among the first ten leading causes

Table 4 : Percentage of NCD admissions and their ranking order, 1997 - 2007

Disease and ICD (10th Revision) Code	2007		2006		2005		2004		2003		2002 ⁽⁶⁾		2001		2000		1999		1998		1997 ⁽¹⁾	
	Rank	%	Rank	%	Rank	%	Rank	%	Rank	%	Rank	%	Rank	%	Rank	%	Rank	%	Rank	%	Rank	%
Traumatic injuries (S00-T19, W54)	1	16.1	1	17.0	1	16.2	1	16.5	1	16.7	1	14.5	1	13.4	1	14.6	1	14.1	1	13.4	1	13.0
Diseases of the respiratory system excluding diseases of the upper the respiratory tract, pneumonia and influenza (J20-J22, J40-J98)	2	9.7	2	10.4	2	9.3	2	10.0	2	10.8	2	9.7	2	8.1	2	9.6	2	9.9	2	10.0	2	10.1
Hypertensive diseases (I10-I15)	12	2.5	11	2.6	11	2.7			11	2.8	11	2.5	11	2.3	11	2.4	11	2.3				
Other injuries and early complications of trauma (T33-T35, T66-T79, T90-T98)	13	0.8																				

Source : Extracted from Annual Health Bulletin, Ministry of Health, Sri Lanka, page 114

Excludes:

1. Ampara District
6. Kilinochchi District

Table 5 : Trend in Percentage of NCD Hospitalization, 1997 - 2007

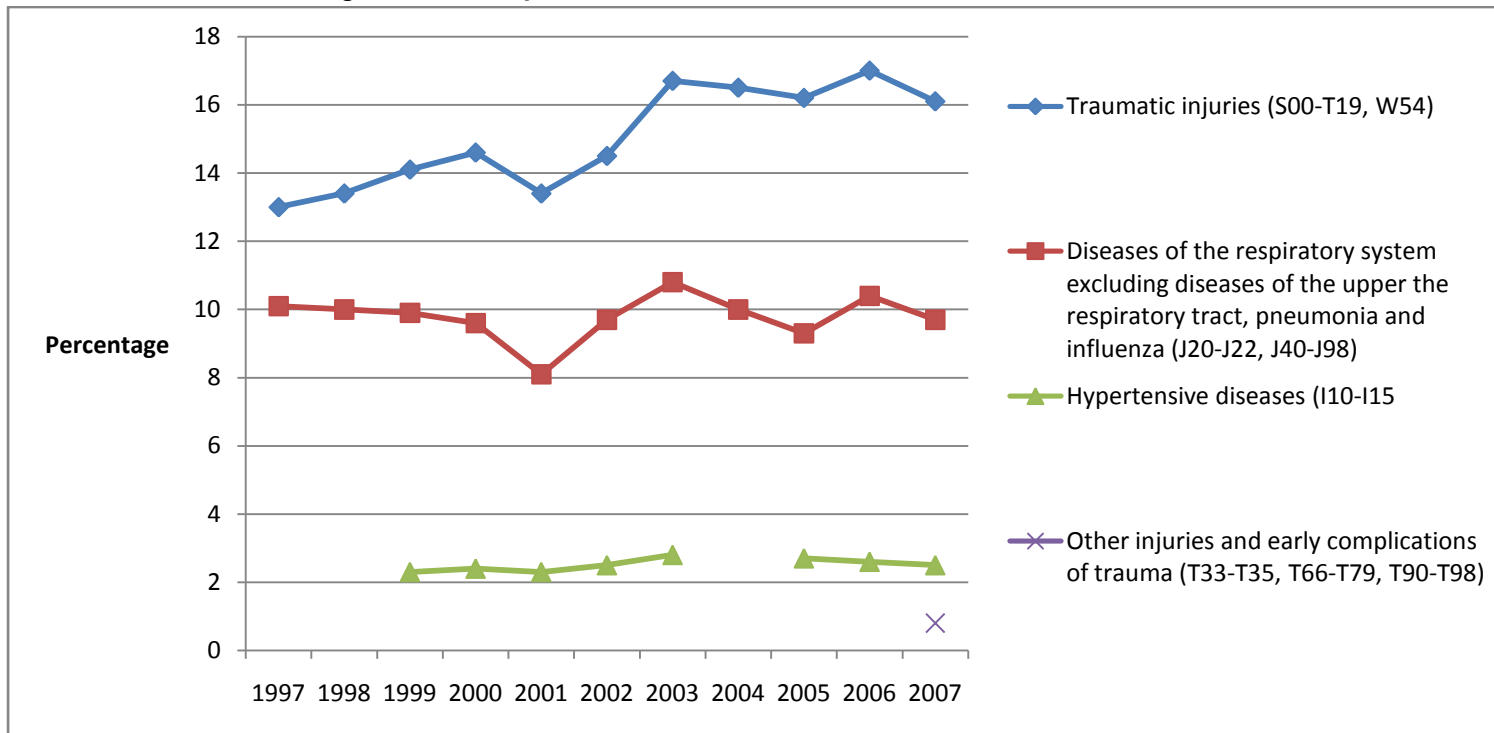


Table 6 : Leading NCD Related Hospital Deaths, 2007

Rank Order	ICD Code (10th Revision)	Causes of Death	Number of Deaths	Proportionate Mortality	Rate per 100,000 Population
1	I20 - I25	Ischaemic heart disease	4,536	13.1	22.7
2	C00 - D48	Neoplasms ⁽¹⁾	3,498	10.1	17.5
3	I26 - I51	Pulmonary heart disease and diseases of the pulmonary circulation	3,490	10.1	17.4
4	I60 - I69	Cerebrovascular disease	3,193	9.2	16.0
6	J20-J22 J40-J98	Diseases of the respiratory system, excluding diseases of upper respiratory tract	2,258	6.5	11.3
10	S00 - T19, W54	Traumatic injuries	1,389	4.0	6.9
	A00-T98, Z00-Z13, Z35 Z40- Z54	All causes ⁽²⁾	34,593	100.0	172.9

Source : Extracted from Annual Health Bulletin, Ministry of Health, Sri Lanka, page 115

1. Includes deaths reported (not classified by type of neoplasm) from Cancer Institute, Maharagama
2. Analyzed deaths only

Table 7 : Leading NCD Related Hospital Deaths by District, 2007

Rank Order	District and																										
	Sri Lanka	Colombo	Gampaha	Kalutara	Kandy	Matale	Nuwera Eliya	Galle	Matara	Hambantota	Jaffna	Vavuniya	Mannar	Kilinochchi	Mullativu	Batticaloa	Ampara	Trincomalee	Kurunegale	Puttalam	Anuradhapura	Polonnaruwa	Badulla	Moneragale	Ratnapura	Kegalle	
Disease and ICD (10th Revision) Code																											
Ischaemic heart diseases (I20-I25)	1	2	1	2	1	1	1	2	1	1	3	1	1	-	1	2	1	1	2	2	2	1	1	1	1	2	1
Neoplasms ¹ (C00-D48)	2	1	8	12	2	6	8	1	11	14	1	14	6	-	8	13	16	5	9	17	3	9	2	9	8	7	
Pulmonary heart disease and diseases of the pulmonary circulation (I26-I51)	3	3	3	3	5	3	3	4	5	6	2	3	10	-	4	4	2	4	4	3	7	7	4	2	1	2	
Cerebrovascular disease (I60-I69)	4	4	4	4	3	2	6	3	2	3	5	6	11	-	16	7	6	3	1	4	6	3	5	8	3	3	
Diseases of the respiratory system excluding diseases of the upper the respiratory tract, pneumonia and influenza (J20-J22, J40-J98)	6	7	5	5	6	4	5	5	3	2	7	8	5	-	3	3	5	7	3	6	8	6	7	3	4	5	
Traumatic injuries (S00-T19)	10	9	10	10	12	12	18	6	16	9	10	10	3	-	9	1	9	16	14	12	12	12	3	10	12	15	
Toxic effects of pesticides (T60)	12	13	14	11	13	5	4	12	8	4	15	13	4	-	2	10	7	19	7	15	5	4	6	6	6	9	
Hypertensive disease (I10-I15)	15	17	13	13	14	7	7	16	15	5	23	16	9	-	17	17	11	12	15	9	20	21	13	19	14	14	
Diabetes mellitus (E10-E14)	16	14	12	17	15	14	12	13	18	12	16	17	19	-	19	21	14	15	17	16	15	15	15	15	16	19	
Poisoning and toxic effects, excluding toxic effects of pesticides (T36-T59,T64, T61-T62,T65)	17	19	15	16	18	17	24	17	14	11	17	21	12	-	10	11	18	18	11	8	21	16	17	13	7	16	
Burns and corrosion (T20-T32)	18	15	18	21	19	24	13	19	19	21	12	9	23	-	20	24	19	14	19	19	18	17	19	22	18	20	
Snake bites (T63.0)	21	23	20	22	21	19	23	22	22	18	24	19	24	-	14	12	24	21	20	21	17	20	20	16	20	24	

Source : Extracted from Annual Health Bulletin, Ministry of Health, Sri Lanka, page 116

■	Among the first five leading causes
■	Among the first ten leading causes

Table 8 : Percentage distribution of Hospital Deaths and ranking order, 1997- 2007

Disease and ICD (10th Revision) Code	2007		2006		2005		2004		2003		2002 ⁽⁶⁾		2001		2000		1999		1998		1997 ⁽¹⁾	
	Rank	%	Rank	%	Rank	%	Rank	%	Rank	%	Rank	%	Rank	%	Rank	%	Rank	%	Rank	%	Rank	%
Ischaemic heart disease (I20-I25)	1	13.1	1	12.6	1	11.4	1	11.6	1	12.5	1	9.9	1	8.5	1	10.6	1	10.0	1	9.5	1	13.1
Neoplasms¹ (C00-D48)	2	10.1	3	9.9	4	8.3	2	9.5	8	4.4	5	6.1	5	6.4	5	7.5	5	7.4	5	6.7	2	10.1
Cerebrovascular disease (I60-I69)	4	9.2	4	8.9	5	7.7	4	8.9	4	9.1	4	7.4	3	7.1	3	9.0	3	9.1	4	8.6	4	9.2
Diseases of the respiratory system excluding diseases of the upper the respiratory tract, pneumonia and influenza (J20-J22, J40-J98)	6	6.5	6	6.9	6	7.3	6	6.8	5	6.9	6	5.8	6	5.3	6	6.5	6	6.8	7	6.1	6	6.5
Toxic effects of pesticides (T60)	12	3.3	11	3.8			10	4	6	4.5	7	4.0	7	4.1	7	5.4	7	5.7	6	6.7	12	3.3
Traumatic injuries (S00-T19, W54)	10	4.0	12	3.8	8	5			11	4.2	11	3.2	9	3.2	10	4.0	9	4.5	11	3.8	10	4.0

Source : Extracted from Annual Health Bulletin, Ministry of Health, Sri Lanka, page 117

1. Includes deaths reported from the Cancer Hospital (not analysed by site and type of neoplasm).
 Excludes:
 3. Kilinochchi District

Table 9 : Trends in NCD related Hospital Death percentages, 1997 - 2007

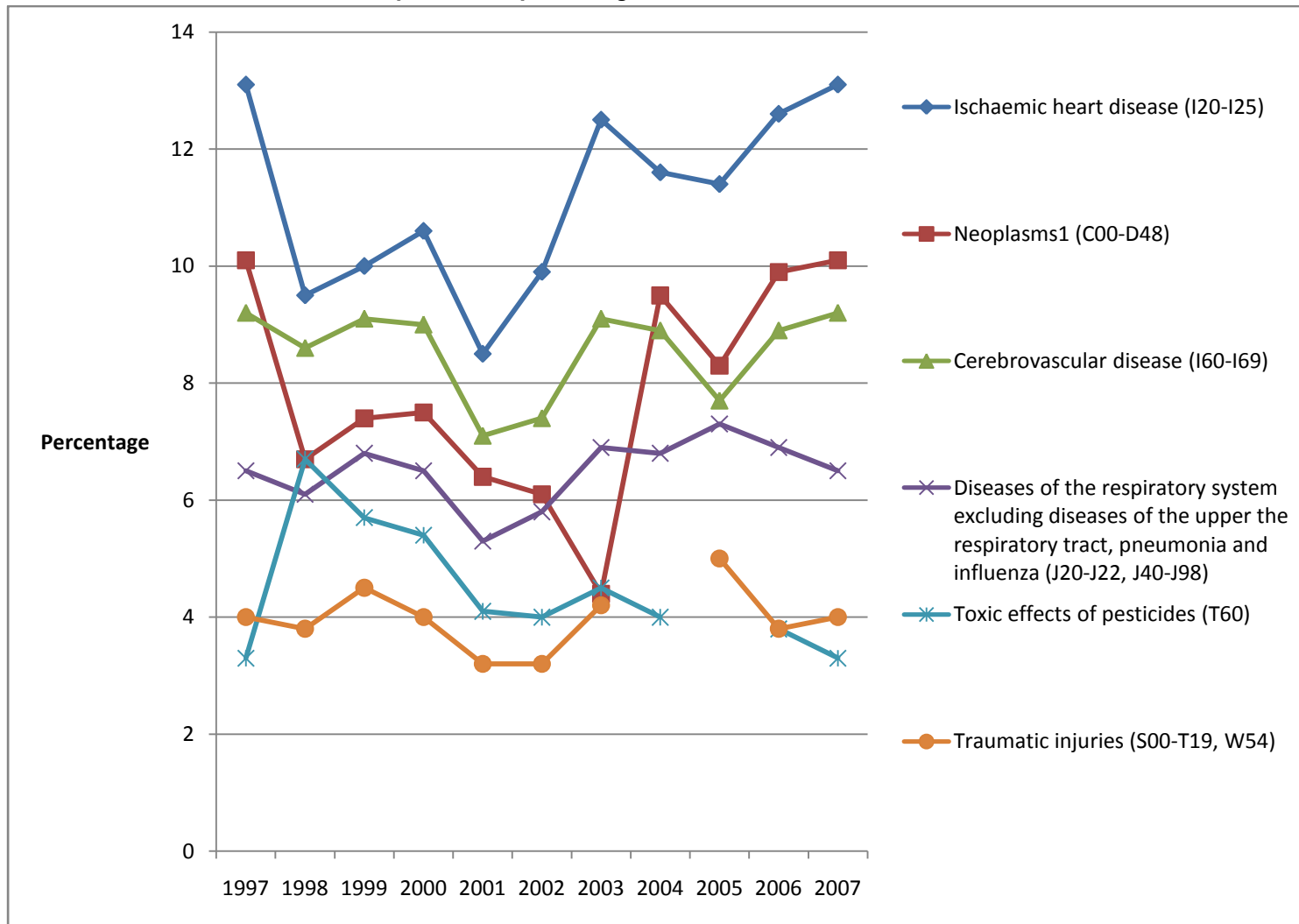


Table 10 : Age Specific Mortality Rates per 100,000 Population by Broad Disease Groups Related to NCDs, 2001

Disease and ICD (10th Revision) Code	Under 1	1-4	5-9	10-14	15-19	20-24	25-29	30-39	40-49	50-59	60-69	70+	All Ages
Neoplasms 1 C00-D48	5.0	3.6	4.6	4.1	4.3	5.0	5.6	11.6	41.7	108.4	206.9	306.6	43.0
Mental and behavioural disorders F01-F99	0.3	0.2	0.2	0.5	0.6	0.8	1.4	5.8	10.5	13.2	17.5	30.4	5.9
Diseases of the circulatory system I00-I99	86.8	9.7	4.2	4.5	5.3	9.5	13.7	24.9	80.8	237.6	598.4	1,449.8	131.6
Diseases of the respiratory system J00-J98	56.1	9.0	2.6	2.1	3.4	4.4	5.4	11.5	28.2	70.7	198.0	488.6	45.2
All Causes	1,260.5	72.9	43.2	42.1	93.0	174.2	190.1	228.3	402.9	820.4	1,886.7	6,603.0	602.5

Source : Extracted from Annual Health Bulletin, Ministry of Health, Sri Lanka, page 120

Table 11 : Age Specific Mortality Rates per 100,000 Population, 2001

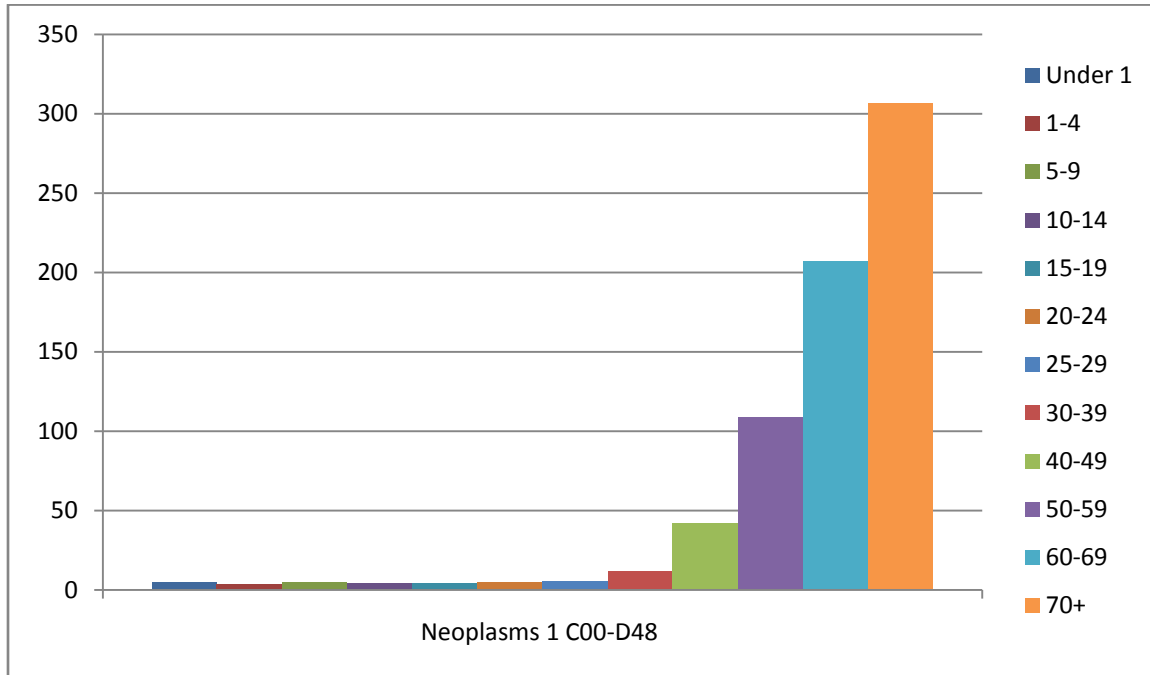


Table 12: Age Specific Mortality Rates per 100,000 Population, 2001

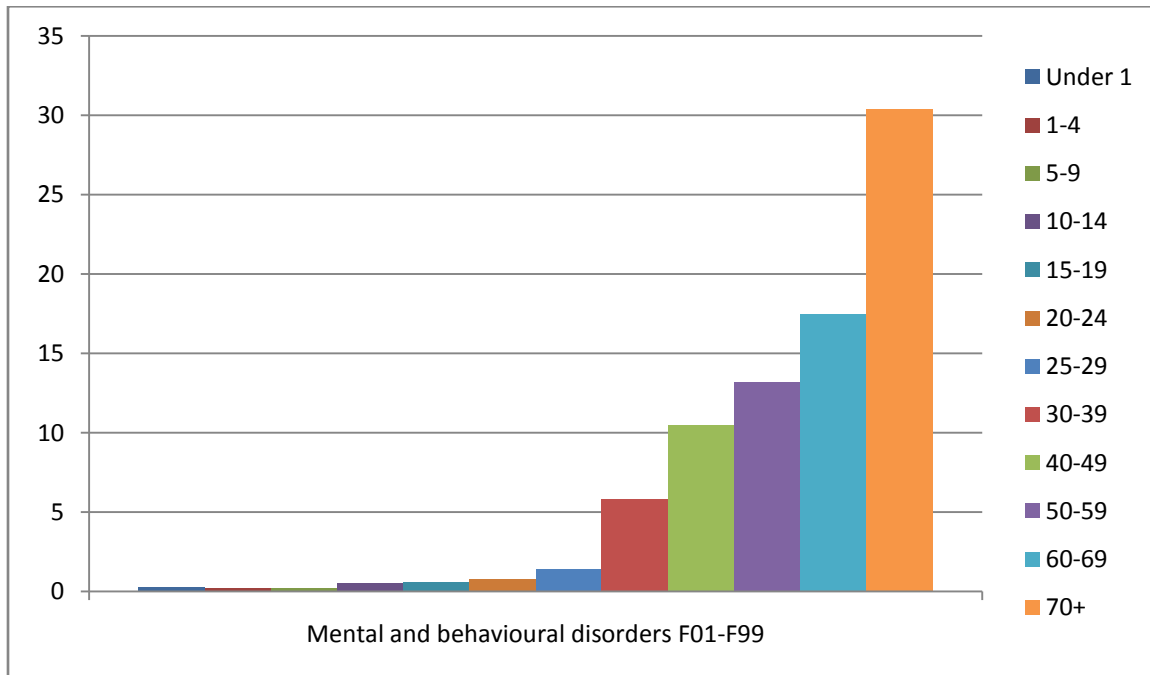


Table 13: Age Specific Mortality Rates per 100,000 Population, 2001

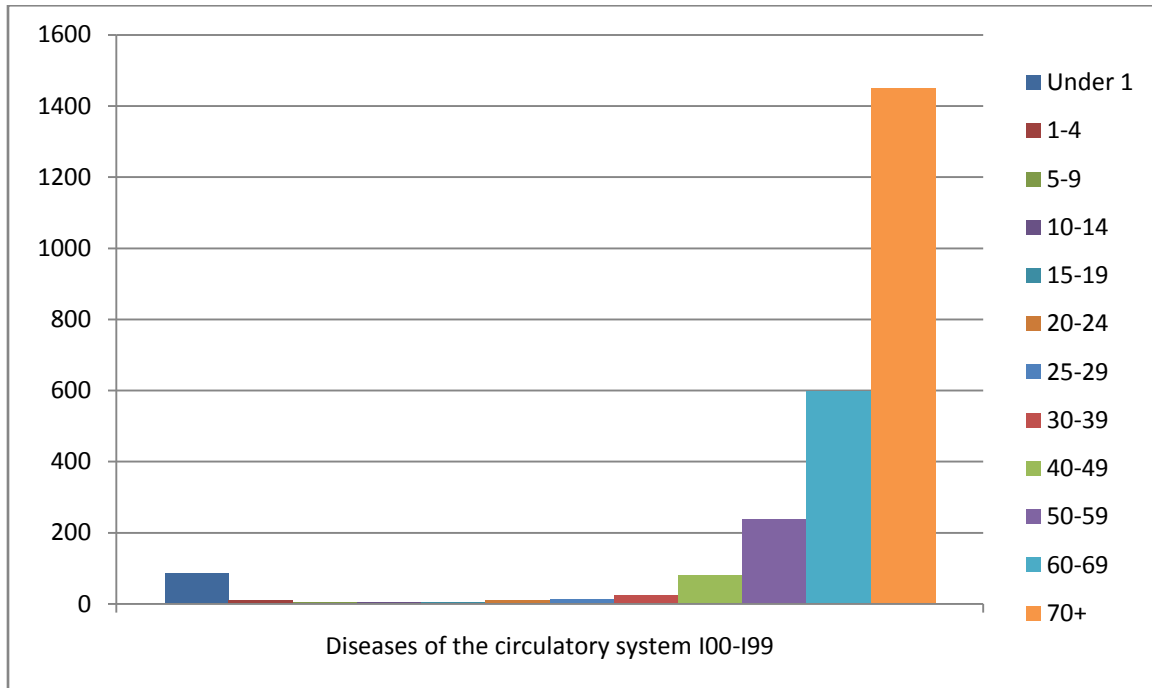


Table 14: Age Specific Mortality Rates per 100,000 Population, 2001

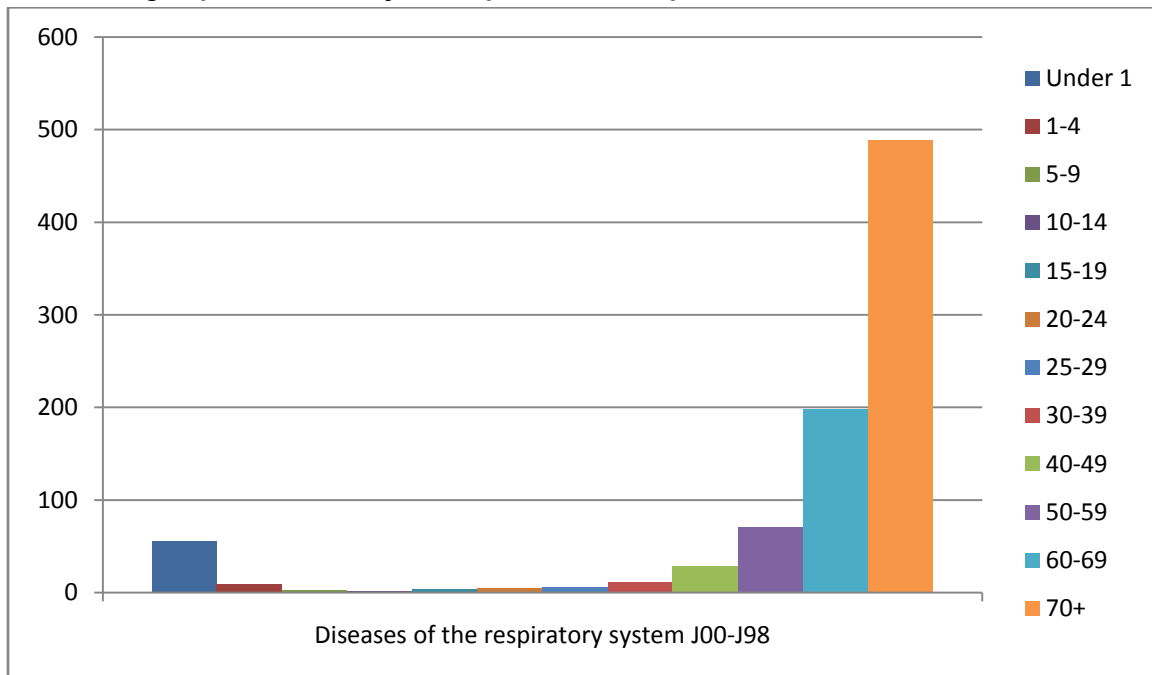


Table 15 : Age Specific Mortality Rates per 100,000 Population by Broad Disease Groups Related to NCDs, 2001

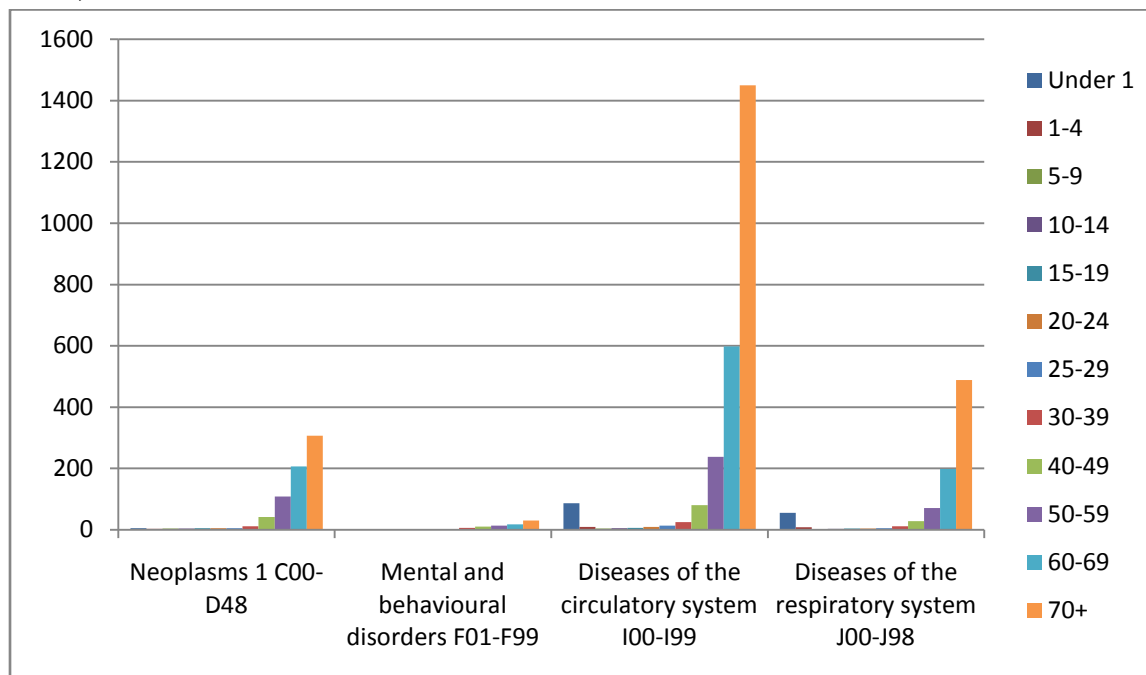


Table 16: Age Specific Mortality Rates per 100,000 Population by Broad Disease Groups Related to NCDs, 2001

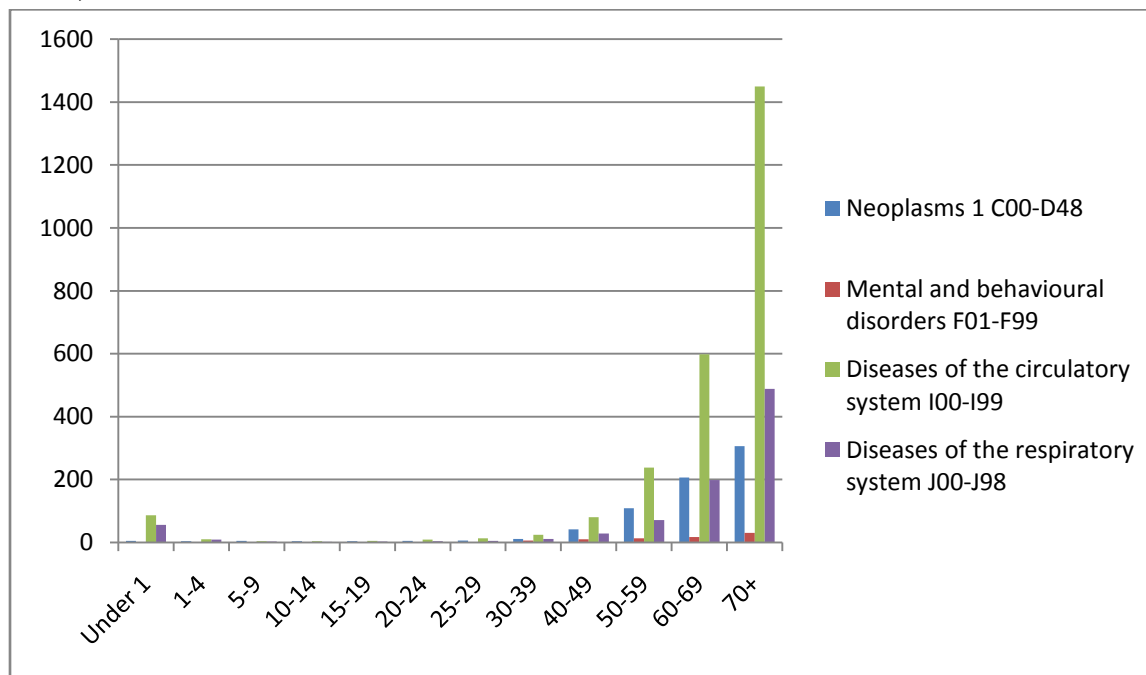


Table 17 : Age and Sex specific Mortality Rates Per 100,000 Population for Selected NCDs, 2001

Disease and ICD (10th Revision)Code	Sex	All ages	Under	1-4	5-14	15-24	25-44	45-64	65 & over
Neoplasms C00-D48	M	47.3	3.8	3.7	5.3	5.1	13.7	111.2	345.9
	F	38.9	6.3	3.4	3.3	4.2	15.2	95.3	219.1
Mental and behavioural disorders F01-F99	M	9.8	0.5	0.2	0.3	1.0	10.3	24.0	36.8
	F	2.1	0.0	0.3	0.4	0.4	1.0	2.5	17.7
Hypertensive diseases I10-I14	M	25.7	2.7	0.0	0.2	0.4	2.8	42.8	281.8
	F	19.7	1.7	0.5	0.0	0.7	1.7	21.9	219.9
Ischaemic heart diseases I20-I25	M	71.3	8.7	1.2	0.7	1.7	23.5	168.5	551.9
	F	30.7	9.7	1.3	0.4	0.7	3.9	46.7	299.1
Diseases of the respiratory system J00-J98	M	58.6	64.9	8.7	2.3	4.3	17.3	102.3	530.3
	F	32.2	46.8	9.2	2.4	3.4	8.2	44.5	278.8
Transport accidents V01-V99	M	18.2	1.1	1.9	3.0	13.0	22.5	30.1	48.8
	F	3.5	0.6	1.0	1.5	1.5	2.5	5.8	14.6
Accidental poisoning by and exposure to noxious substances X40-X49	M	1.0	0.0	0.5	0.1	0.6	1.1	1.9	2.7
	F	0.3	1.1	0.8	0.1	0.2	0.2	0.3	0.2
Intentional self-harm X60-X84	M	38.7	0.0	0.0	1.1	28.4	56.9	63.8	80.5
	F	10.6	0.0	0.0	0.9	22.3	13.5	8.0	11.8
Deaths from all causes	M	763.1	1,404.6	77.0	48.2	190.0	393.5	1,194.6	5,877.8
	F	745.7	1,109.7	68.7	36.9	74.1	104.4	466.0	4,153.7

Source : Extracted from Annual Health Bulletin, Ministry of Health, Sri Lanka, page 123 - Based on Registrar General's Mortality statistics.

Table 18 : Sex specific mortality Rates per 100,000 Population for Selected NCDs, 2001

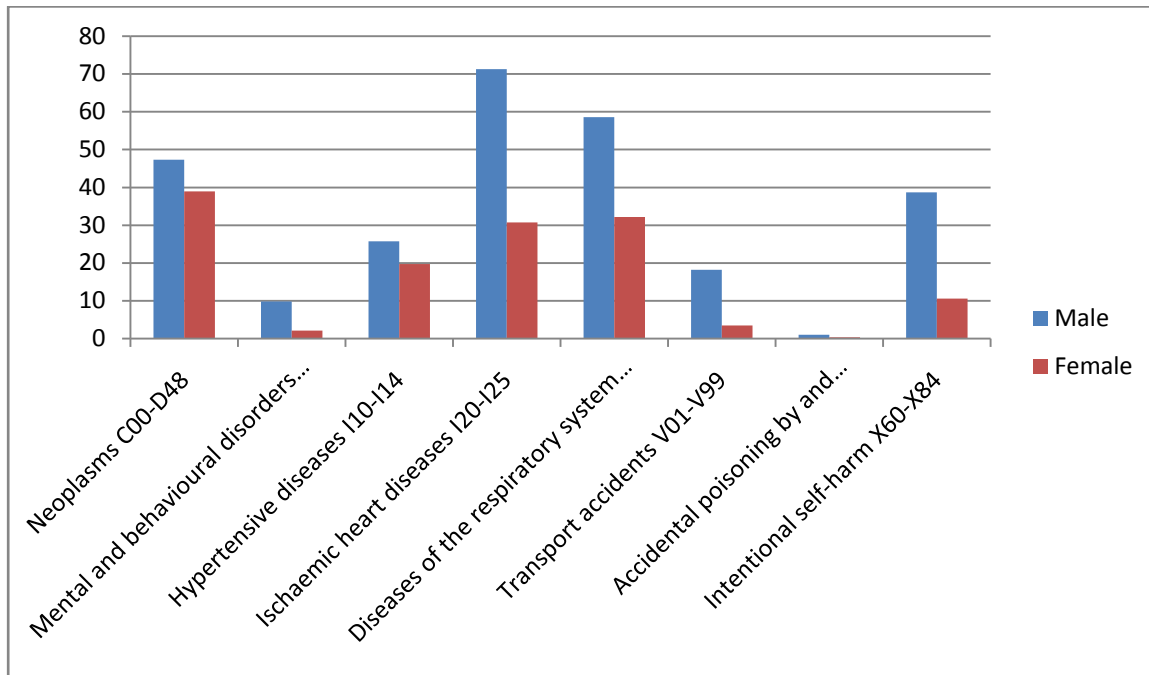


Table 19 : Age and Sex specific mortality Rates per 100,000 Population for Neoplasms, 2001

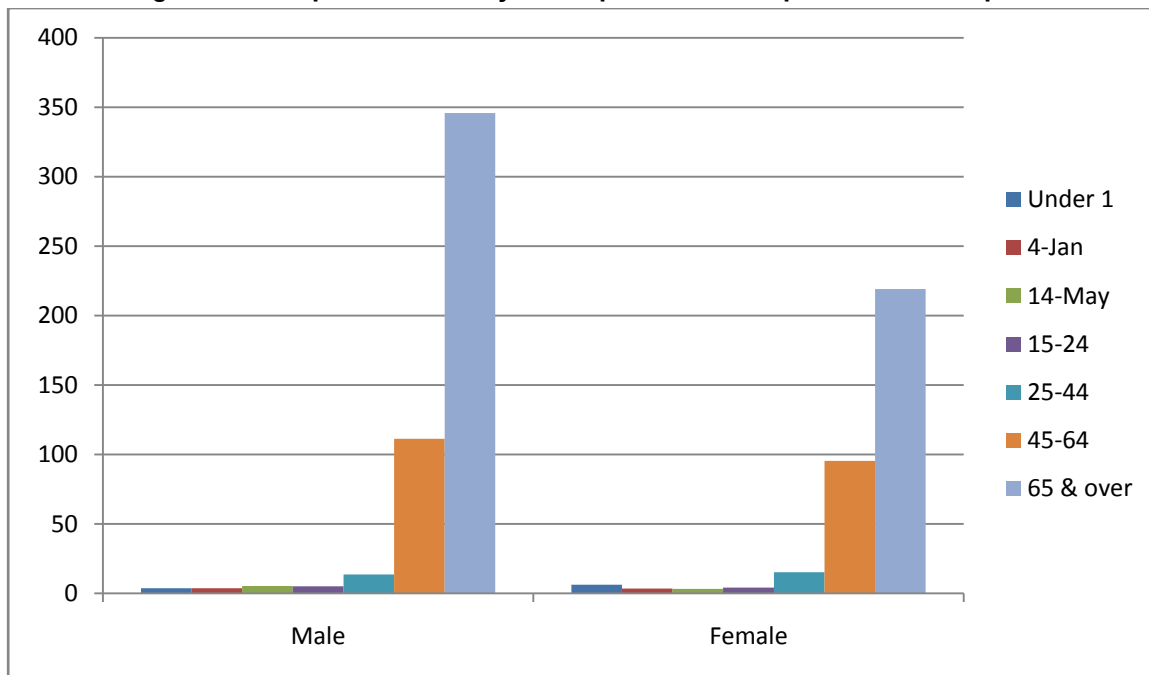


Table 20 : Age and Sex specific mortality Rates per 100,000 Population for Mental and behavioural disorders, 2001

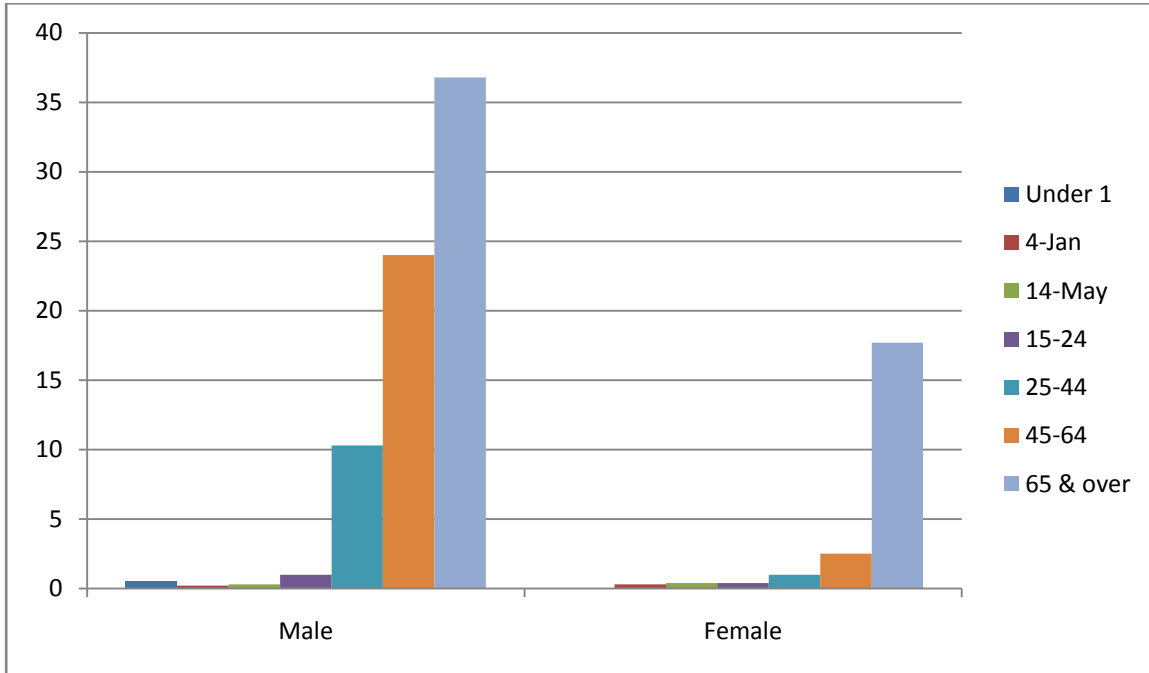


Table 21: Age and Sex specific mortality Rates per 100,000 Population for Hypertensive diseases, 2001

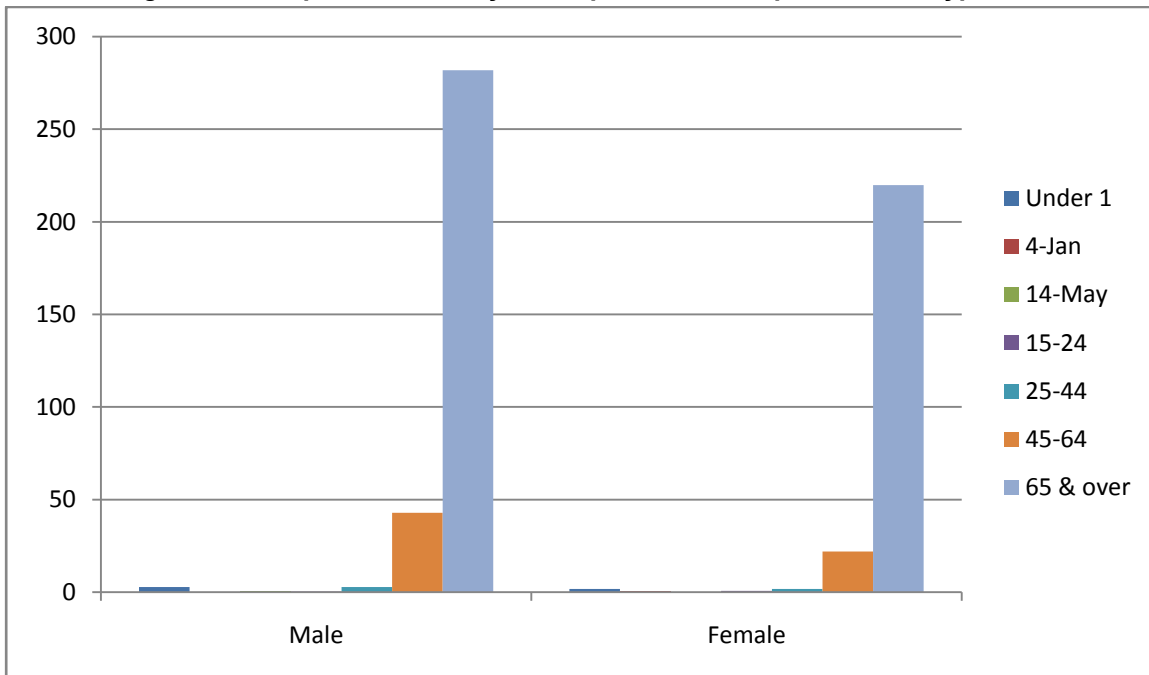


Table 22 : Age and Sex specific mortality Rates per 100,000 Population for Ischaemic heart diseases, 2001

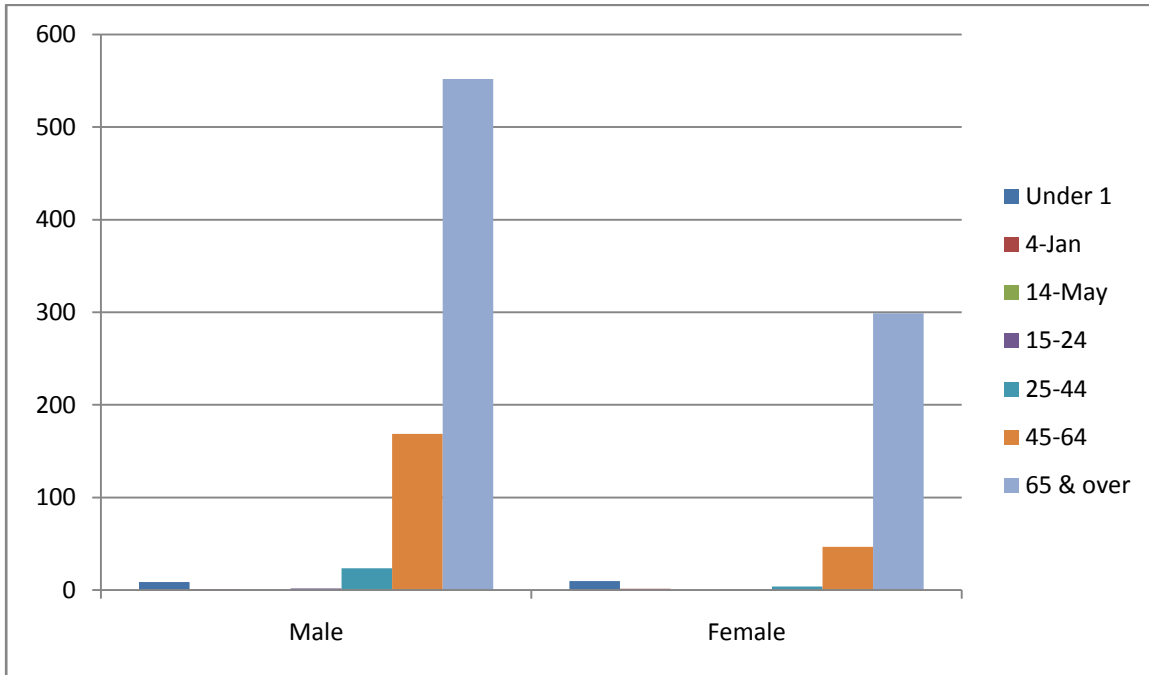


Table 23 : : Age and Sex specific mortality Rates per 100,000 Population for Diseases of the respiratory system, 2001

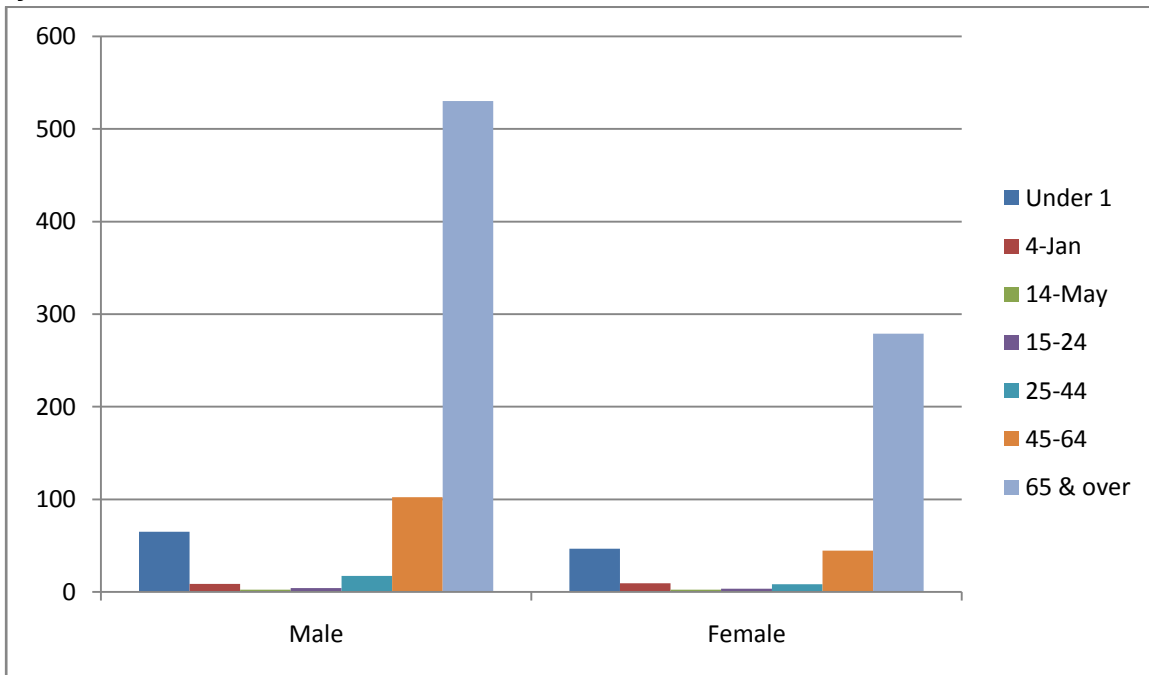


Table 24 : Age and Sex specific mortality Rates per 100,000 Population for Transport accidents, 2001

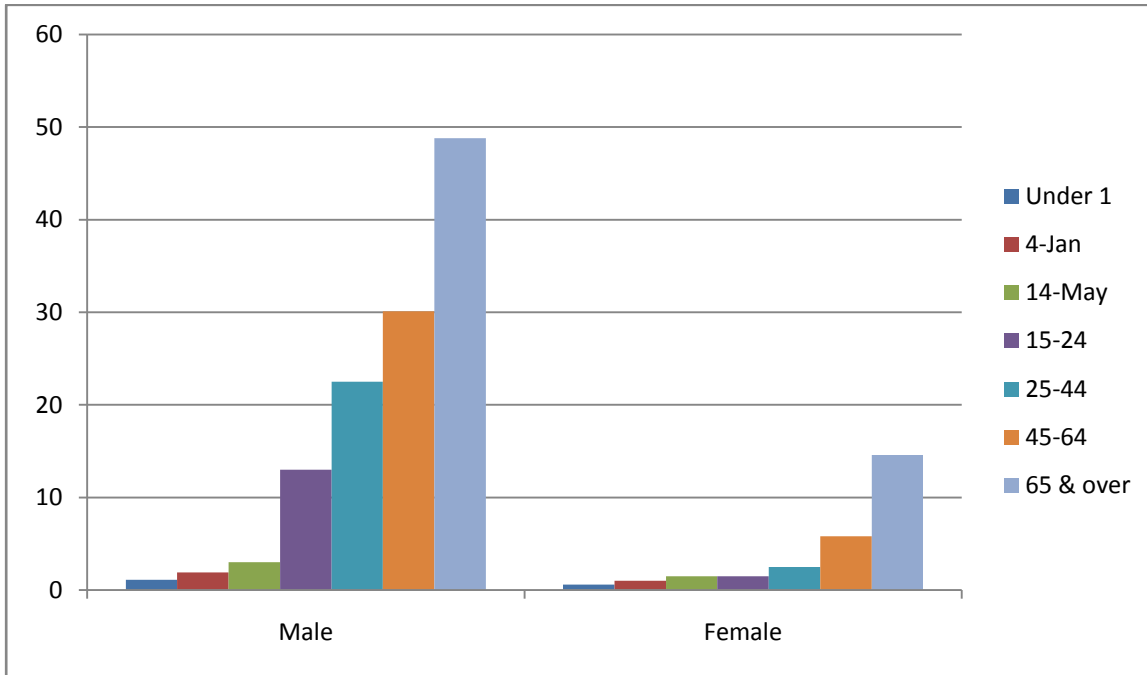


Table 25 : Age and Sex specific mortality Rates per 100,000 Population for Accidental poisoning by and exposure to noxious substances, 2001

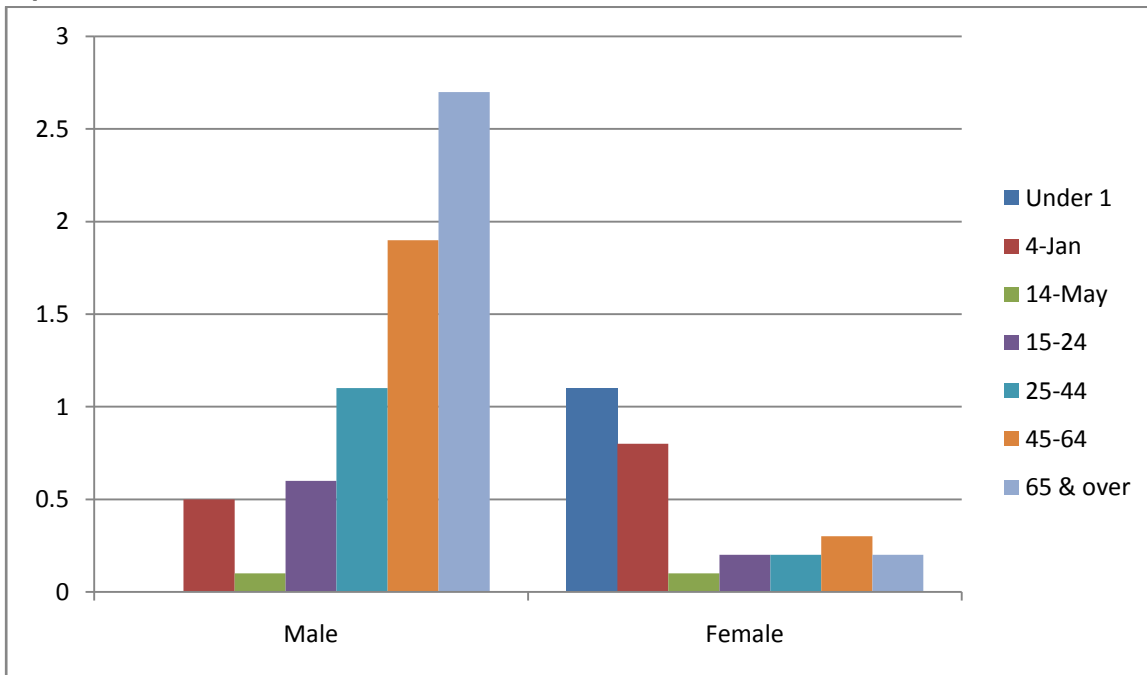


Table 26 : Age and Sex specific mortality Rates per 100,000 Population for Intentional self-harm, 2001

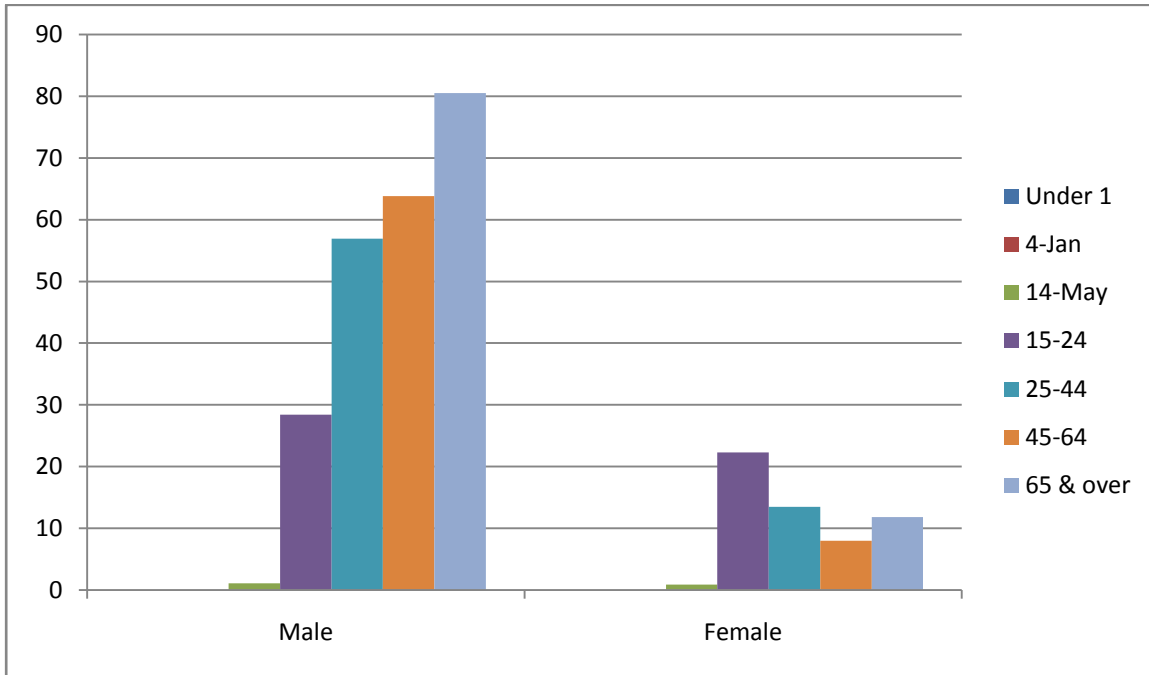


Table 27 : Case Fatality Rate for Selected NCDs, 2003, 2004, 2005, 2006* and 2007

Disease	2003			2004			2005			2006*			2007		
	Cases	Deaths	Case Fatality Rate	Cases	Deaths	Case Fatality Rate	Cases	Deaths	Case Fatality Rate	Cases	Deaths	Case Fatality Rate	Cases	Deaths	Cases
Snake bites	36,832	92	0.2	34,596	102	0.2	36,861	134	0.2	39,793	100	0.3	39,321	91	0.2
Hypertensive diseases	89,131	609	0.7	86,745	615	0.6	90,016	767	0.6	95,540	593	0.6	93,985	583	0.6
Ischaemic heart disease	65,787	3,619	5.5	65,462	3,730	5.6	69,598	3,762	5.6	79,524	4,125	5.2	85,455	4,536	5.3
Asthma	177,392	702	0.4	161,948	846	0.4	160,738	841	0.4	181,050	765	0.4	178,777	721	0.4

Source : Extracted from Annual Health Bulletin, Ministry of Health, Sri Lanka, page 124

* Revised

Table 28 : Case Fatality Rate for Selected NCDs, 2003, 2004, 2005, 2006* and 2007

